



**City of Cottage Grove
Natural Hazard Mitigation Advisory
Committee Organizational Meeting
January 26, 2022 at 9:30 AM
City Hall Council Chambers**

Members Present in Person: DLCD- Pam Reber, City Planner –Eric Mongan, Public Works Director- Faye Stewart, Assistant Planner – Matt Laird, Assistant to City Manager- Jake Boone, Community Sharing Director- Mike Fleck, City Engineer- Ron Bradsby, SLC Fire Marshall-Danny Solesbee, Administrative Assistant-Angela Keppler

Members Present Online: Coast Fork Watershed Council-Amanda Gilbert, Waste Water Superintendent- Erich Schroeder

Pam presented a power point for the City of Cottage Grove Natural Hazard Mitigation Plan Update. Agenda and Power Point are attached.

The topics of discussion were:

1. Disaster Risk Management Cycle
2. Project Components
 - Planning Process
 - Hazard Identification and Risk Assessment
 - Mitigation Strategy
 - Plan Review, Evaluation, and Implementation
 - Plan Adoption
3. When is a Hazard a Risk?
4. Local Risk Assessment
5. State Risk Assessment
6. Update Priorities
 - Plan Integration
 - Updated Hazard Information
 - Wildfire, Landslides, and Floodplain Management
7. Public Outreach
8. Community Engagement
9. Plan Update Overview



10. HMAC Membership Outcomes

11. HMAC Membership Responsibilities

- Attending and Actively Participating, Cost Share
- Providing Data and Information
- Engaging

Members discussed outreach to groups, or organizations that would benefit from inviting to our team, and ways to reach the public. They include:

- Local Churches
- Community Members in higher risk areas
- Red Cross
- Police
- Hospitals, Life Flight
- School District
- National Guard
- Lane County Emergency Manager
- The State's Emergency Manager's Office
- SIM Program (Mass Notification System)
- Corps of Engineers
- Department of Forestry
- Volunteer Fire Department
- HAM Radio Group
- Friends of Mt. David
- Local Papers, City's Website and Friday updates

Faye Stewart talked about an upcoming Preparing for Emergency Fair scheduled for August 6, 2022, and the possibility of getting a booth there for outreach.

Pam explained that we will be using a file sharing tool called "Box" as our File Transfer Protocol (FTP) site. This will be where all the materials for the project will be kept. She will send an invite to all the members to sign up for "Box" and get access to the files.

Eric said he is working to create a link on the City's website where all the information regarding the Natural Hazard Mitigation Plan can be found and easily accessed and updated.

Next Meeting will be on February 23, 2022 at 9:30 AM at City Hall Council Chambers.
March's meeting is scheduled for March 16, 2022 at 9:30 AM at City Hall Council Chambers.



Pam recommended the group read *Chapter Three* of the current Natural Hazard Mitigation Plan Projects. We will discuss this at the next meeting.

Danny mentioned some possible grant funding from the state to state fire marshal's office to fund projects to mitigate fire danger in areas of high risk around the state. He thinks we could potentially use these funds to print out brochures or pamphlets to get the word out about risks of wildfires. He will look into it further and get back to us.

Adjournment

Meeting was adjourned at 10:44 AM





City of Cottage Grove Natural Hazards Mitigation Plan Update

Hazard Mitigation Advisory Committee Organizational Meeting
 Online via WebEx
 Tuesday, January 26, 2022, 9:30-10:30AM
 Pam Reber, DLCD
 Eric Mongan & Faye Stewart, Cottage Grove


1

Welcome

- Welcome/ Introductions
- Project Overview
- Floodplain Planning
- Public Involvement/ Cost Share
- Public Comment
- Next Steps



City of Cottage Grove
 Natural Hazard Mitigation Plan (NHMP)
 2022 Update
 Organizational Meeting
 January 26, 2022 09:30- 11:00AM
 Hybrid Meeting
 in City Council Chambers, 400 E. Main St., and Online via
<https://www.gotomeet.me/RichardMevers/natural-hazard-mitigation-plan-update-meeting>



OREGON
 Department of Land Conservation & Development

You can also dial in using your phone.
 United States (Toll Free): [1 877 309 2073](tel:18773092073)
 United States: [+1 \(571\) 317-3129](tel:+15713173129)

Access Code: 417-087-397

AGENDA	
Welcome/Introductions	Faye Stewart, City Eric Mongan, City
<ul style="list-style-type: none"> • During introductions, please share your name, title, and organization. 	
Project Overview	Pam Reber, DLCD
<ul style="list-style-type: none"> • Plan update components • Update priorities 	
Floodplain Management Planning	Eric Mongan, City
<ul style="list-style-type: none"> • NHMP Update to align with floodplain planning activity. 	
Public Involvement/ Cost Share	Pam Reber, DLCD
<ul style="list-style-type: none"> • Steering Committee roster & process. • Public engagement discussion. 	
<ul style="list-style-type: none"> • Providing filled out cost share forms helps the process. 	
Public comment	Eric Mongan, City
<ul style="list-style-type: none"> • Please provide name and address/email address for future notices. 	
Next Steps	Pam Reber, DLCD
<ul style="list-style-type: none"> • Meeting schedule: Let's choose next HMAC dates in March, May. • Information requests 	

City of Cottage Grove NHMP Website
<https://www.cottagegroveor.gov/cd/nhmp/natural-hazards-mitigation>

City of Cottage Grove Natural Hazards Advisory Committee (HMAC)

2

2

Introductions

PLEASE SIGN IN:

- If in person, see sign in sheet.
- If online, please put your name in the meeting chat.

KEEP IN TOUCH:

- To receive future meeting notices, provide your contact information to: planner@cottagegrove.org or pamela.reber@dlcd.oregon.gov

MEETING HOSTS:

Convener: Faye Stewart, Public Works Director
FMP Project Manager/ Co-Convener: Eric Mongan, Senior Planner
NHMP Project Manager: Pam Reber, DLCD Natural Hazards Planner

City of Cottage Grove Natural Hazards Advisory Committee (HMAC) 3

3

The diagram illustrates the Disaster Risk Management Cycle as a continuous loop. It is divided into four quadrants: Mitigation (top-left, green), Preparedness (top-right, yellow), Response (bottom-right, blue), and Recovery (bottom-left, orange). The top half is labeled 'pre-event stages' and the bottom half 'post-event stages'. A red starburst labeled 'Event' is positioned between the Preparedness and Response stages. Arrows indicate a clockwise flow from Mitigation to Preparedness, then to Response, then to Recovery, and finally back to Mitigation. The center of the cycle is labeled 'DISASTER RISK MANAGEMENT CYCLE'.

Disaster Risk Management Cycle

City of Cottage Grove Natural Hazards Advisory Committee (HMAC) 4

4

Project Components

- Project Components
- Update Priorities

FEMA Local NHMP Review Tool Checklist

ELEMENT A. PLANNING PROCESS

A1. Does the Plan document the planning process, including how it was prepared and who was involved in the process for each jurisdiction?

A2. Does the Plan document an opportunity for neighboring communities, local and regional agencies involved in hazard mitigation activities, agencies that have the authority to regulate development as well as other interests to be involved in the planning process?

A3. Does the Plan document how the public was involved in the planning process during the drafting stage?

A4. Does the Plan describe the review and incorporation of existing plans, studies, reports, and technical information?

A5. Is there discussion of how the community(ies) will continue public participation in the plan maintenance process?

A6. Is there a description of the method and schedule for keeping the plan current (monitoring, evaluating and updating the mitigation plan within a 5-year cycle)?

ELEMENT B. HAZARD IDENTIFICATION AND RISK ASSESSMENT

B1. Does the Plan include a description of the type, location, and extent of all natural hazards that can affect each jurisdiction(s)?

B2. Does the Plan include information on previous occurrences of hazard events and on the probability of future hazard events for each jurisdiction?

B3. Is there a description of each identified hazard's impact on the community as well as an overall summary of the community's vulnerability for each jurisdiction?

B4. Does the Plan address NFIP insured structures within the jurisdiction that have been repeatedly damaged by floods?

ELEMENT C. MITIGATION STRATEGY

C1. Does the plan document each jurisdiction's existing authorities, policies, programs and resources and its ability to expand on and improve these existing policies and programs?

C2. Does the Plan address each jurisdiction's participation in the NFIP and continued compliance with NFIP requirements, as appropriate?

C3. Does the Plan include goals to reduce/avoid long-term vulnerabilities to the identified hazards?

C4. Does the Plan identify and analyze a comprehensive range of specific mitigation actions and projects for each jurisdiction being considered to reduce the effects of hazards, with emphasis on new and existing buildings and infrastructure?

C5. Does the Plan contain an action plan that describes how the actions identified will be prioritized (including cost benefit review), implemented, and administered by each jurisdiction?

C6. Does the Plan describe a process by which local governments will integrate the requirements of the mitigation plan into other planning mechanisms, such as comprehensive or capital improvement plans, when appropriate?

ELEMENT D. PLAN REVIEW, EVALUATION, AND IMPLEMENTATION

D1. Was the plan revised to reflect changes in development?

D2. Was the plan revised to reflect progress in local mitigation efforts?

D3. Was the plan revised to reflect changes in priorities?


ELEMENT E. PLAN ADOPTION

E1. Does the Plan include documentation that the plan has been formally adopted by the governing body of the jurisdiction requesting approval?

E2. For multi-jurisdictional plans, has each jurisdiction requesting approval of the plan documented formal plan adoption?

City of Cottage Grove Natural Hazards Advisory Committee (HMAC) 5

5



Source: USGS - Oregon Partnership for Disaster Resilience Research Collaboration, 2006

What is Risk?

When is a hazard a risk?

- There are different tolerances for impacts across populations, assets, buildings, infrastructure.

City of Cottage Grove Natural Hazards Advisory Committee (HMAC) 6

6

Local Risk Assessment: HAZARD VULNERABILITY ASSESSMENT

An HVA is a local risk assessment where risk is ranked relative to local priorities and perspectives.

Considerations:

- Hazard history, frequency, duration, extent, severity.
- Vulnerable Populations/ Buildings/ Assets/ Infrastructure

Table 4.1. City of Cottage Grove Hazard and Risk Assessment, 2016

Threat Event/Hazard	NHMP Risk Assessment Scores	
	Probability	Vulnerability
Earthquake	Low	High
Terrorism/Cyber Attack	Low	Low
Flood - Riverine	High	High
Flood - Dam Failure	Low	Low
Landslide/Debris Flow	Low	Low
Volcano	Low	Medium
Wildfire (WUI)	Medium	Medium
Severe Weather	High	High
HAZMAT Incident	Low	Medium
Drought	Low	Low

Source: City of Cottage Grove Natural Hazards Mitigation Plan

City of Cottage Grove Natural Hazards Advisory Committee (HMCA)

7

7

State Risk Assessment: DOGAMI RISK REPORT

Department of Geology and Mineral Industries (DOGAMI) conducts a HAZUS analysis of five hazards and will provide a full report for the city of Cottage Grove with loss estimates and exposure analysis using specific geohazard data and building footprints/ assessor data.

Considerations:

- Hazard history, frequency, duration, extent, severity.
- Populations/Buildings/ Assets

City of Cottage Grove Natural Hazards Advisory Committee (HMCA)

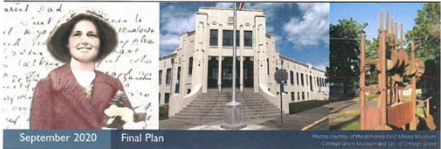
8

8

Update Priorities

- Plan integration
- Updated hazard information
- Wildfire and floodplain management

Disaster Resilience Plan for Heritage Resources in Cottage Grove



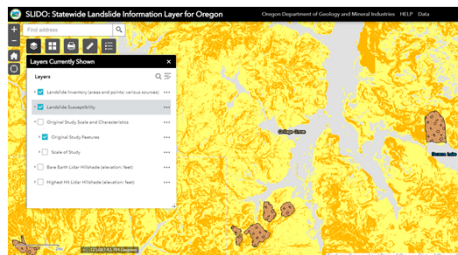
Prepared for
City of Cottage Grove
400 E. Main Street
Cottage Grove, OR 97124

Prepared by
Institute for Policy Research & Engagement
School of Planning, Public Policy, and Management
University of Oregon

UNIVERSITY OF OREGON Institute for Policy Research and Engagement

City of Cottage Grove Natural Hazards Advisory Committee (HMAG) 9

9



Statewide Landslide Information Database for Oregon (SLIDO)

Oregon Department of Geology and Mineral Industries

This is a general compilation of the State of Oregon natural and cultural resources information about their natural or historical performance or of our associated map products. Please be patient.

What is the Statewide Landslide Information Database for Oregon?
SLIDO is a compilation of landslides in Oregon that have been identified as published maps. The database contains only landslides that have been located on other maps. Many landslides have not yet been located or are not on other maps and therefore are not in this database. The database contains only landslides that are located on other maps. The database map shows the locations of landslides, but not other attributes related to landslides in Oregon. The original studies were written in both paper and digital, which is reflected in a wide range of the accuracy, date, and completeness with which the landslides are mapped.

What do I need to use the map viewer?
The map works in modern browsers and on mobile devices as well as desktop computers. If the map does not open by itself or does not contain the latest data, please check your browser's cache.

SLIDO data are available as downloads or as web services. [SLIDO Data](#)

Oregon SLIDO <https://www.oregongeology.org/slido/> maps show landslide susceptibility, historic locations, and geologic features like scarps.

Landslide Data

10

SLIDO: Statewide Landslide Information Layer for Oregon
Oregon Department of Geology and Mineral Industries

Astoria, OR

Layers Currently Showing

- Landslide Inventory (areas and points; various sources)
- Historic Landslide Records (points)
- Scarp
- Head Scarp
- Landslide Susceptibility
- Regional Landslide Susceptibility (scale at 1:500,000)
- Low
- Moderate
- High
- Very High

Landslide Updates

11

OREGON EXPLORER Natural Resources Digital Library

Make Your Home & Property Fire-Safe
Advanced Oregon Wildfire Risk Explorer Map Viewer
Oregon Wildfire Risk Explorer Basic Map Viewer

Board & committees

Rules Advisory Committees - SB762


Wildfire rulemaking under SB762

Combined Wildland-Urban Interface and Statewide Wildfire Risk Mapping

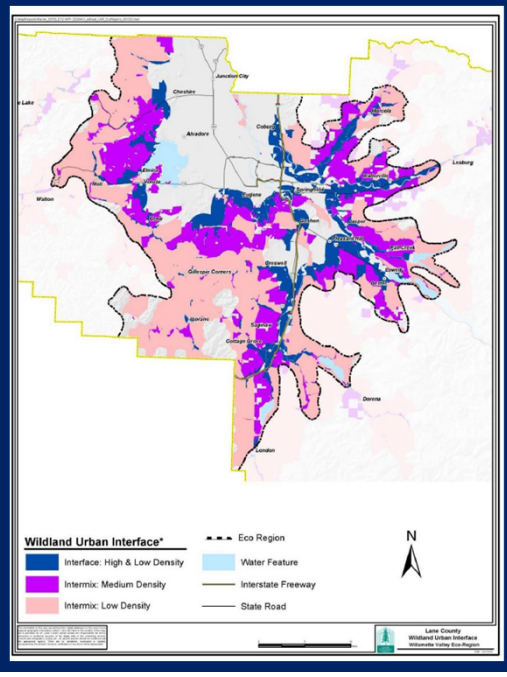
Wildfire Updates

12

Community Wildfire Protection Plan



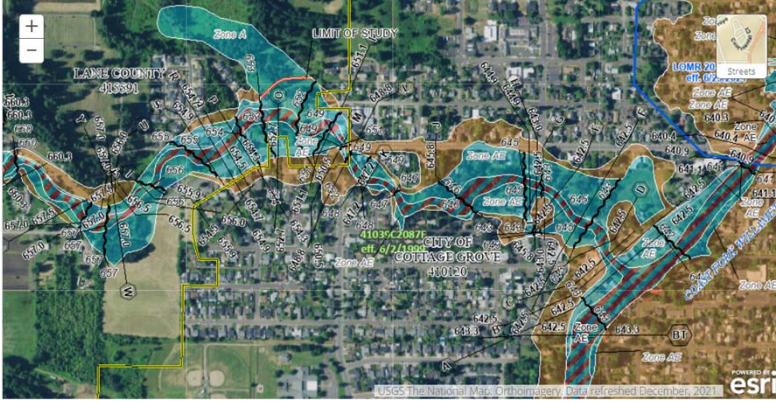
Prepared by:
CWPP Project Steering Committee



- Local and Regional
 - Data
 - Knowledge
 - Priorities
- Areas of Expertise
 - Emergency Mgmt/ Responders
 - Planning
 - Public Works

City of Cottage Grove Natural Hazards Advisory Committee (HMCA) 13

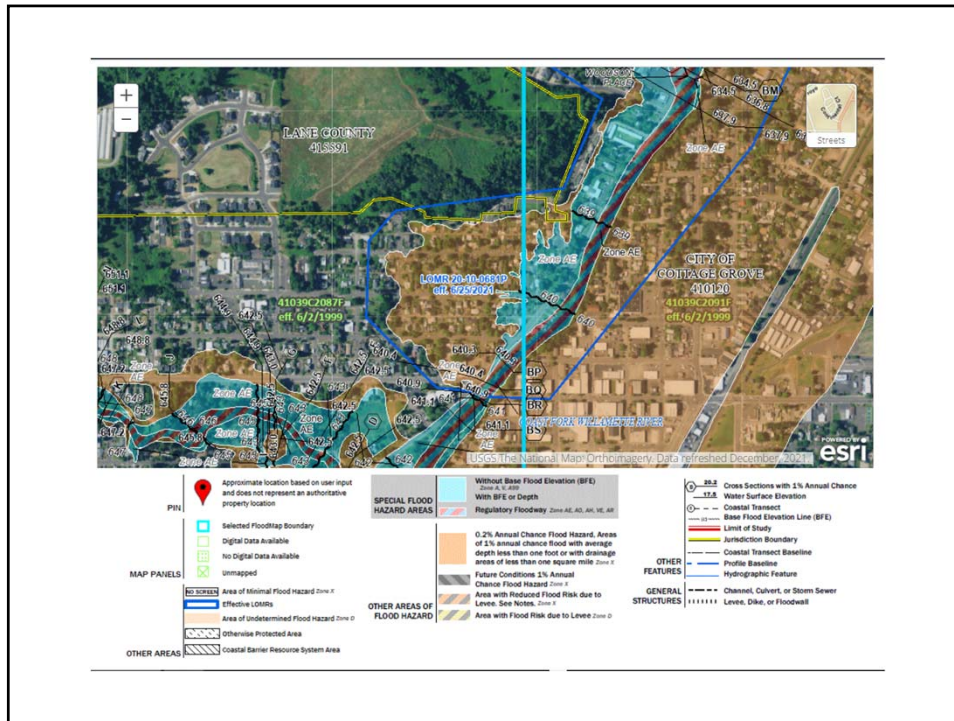
13



FEMA Map Service Center www.msc.fema.gov maps show the floodway, 100-year floodplain, and 500-year floodplains as seen here.

Floodplain Management

14



15

Public Outreach

We want your input!

- Required by FEMA and must be documented
- Website and social media
- NHMP flyers
- Boards, partners, and public
- Surveys?

City of Cottage Grove Natural Hazards Advisory Committee (HMCA) 16

16

Government:

Leslie Knope: Nobody panic! I'll save you... with THIS BINDER!



City of Cottage Grove Natural Hazards Advisory Committee (HMAC)

Community Engagement

Consider existing community groups, building a volunteer cadre like CERT.

Plan Update Overview

- HMAC Meetings
- Public Engagement

City of Cottage Grove Natural Hazards Advisory Committee (HMAC)

2022 Cottage Grove Natural Hazard Mitigation Plan Update Requirements

Responsibility/Task	DLCD	CITY
Steering and Technical Advisory Committee Meetings		
• Prepare and distribute agenda 7-10 days prior to meetings via email. If a SC or TAC member does not have access to email, CITY will ensure the member receives a hard copy 5 days prior to meetings.	X	Assist
• Prepare handouts. If appropriate, distribute handouts 7-10 days prior to meeting via email. If a SC or TAC member does not have access to email, CITY will ensure the member receives a hard copy 5 days prior to meetings.	X	Assist
• Provide language for public notice of meetings if requested.	X	
• Lead and facilitate meetings.	X	Assist
• Prepare and distribute meeting notes.	X	
• Engage with local internal and external stakeholders about the project and bring their input back to the committee discussions.		X
Public Engagement Program		
• Execute Public Engagement Program.		Assist X
• Lead public engagement meetings and events.		Assist X
• Facilitate public engagement meetings and events.		X Assist
• Provide public notice of meetings and events through a variety of means.		Assist X
• Shepherd NHMP through Planning Commission, Board and Council work sessions and adoption process.		Assist X
Plan Development		
• Gather hazard and vulnerability data, existing plans, studies, reports, and technical information.	X	X
• Provide information on climate change and its influence on hazards.	X	
• Provide GIS services.		X
• Provide assessor data.		X
• Provide other data and information.		X Assist
• Analyze data.	X	Assist
• Write plan sections.	X	Assist
• Review plan sections.	X	X
• Edit plan sections.	X	Assist
• Finalize plan.		X
Administrative Functions		
• Publish notice of meetings and events 7-10 days prior to date of occurrence.		X
• Print agenda, sign-in sheet and handouts for meetings. DLCD will print color and 11x17 handouts only if the CITY does not have capability and no commercial printer with capability is reasonably available.	Assist	X
• Develop and maintain during the update and after completion an interactive project web page and link to that page on the CITY's home page.		X
• Establish and maintain a listserve, email service, or dedicated email address accessible on the project web page for communication with the public (e.g., distribute news, receive comments).		X
• Track and accurately report cost-share in the required format at least quarterly by the deadline set by DLCD.		X
• Document the planning process by keeping copies of all agendas, sign-in sheets, notices, publications, web page updates, etc. for inclusion in the updated NHMP.	X	X
• Monitor and adjust project schedule.	X	Assist
• Handle logistics (space reservations, supplies, copies, audio/visual equipment, etc.) for Steering Committee meetings, public engagement meetings and events, etc.		X

HM MAC Membership Outcomes

1. Help the community secure a current, FEMA-approved Natural Hazard Mitigation Plan (NHMP).
2. Identify relevant action items to reduce impacts to assets and protect lives.
3. Establish eligibility for FEMA Hazard Mitigation Assistance (HMA) grant funding.
4. Improve community resilience!

City of Cottage Grove Natural Hazards Advisory Committee (HMAC) 19

19

HM MAC Membership Responsibilities

Specific project responsibilities requested of the Hazard Mitigation Advisory Committee (HMAC) include:

- A. Attending and actively participating** in HMAC meetings;
- B. Tracking, accurately documenting, and reporting **cost share**;
- C. Providing data and information**;
- D. Engaging** with internal and external stakeholders;
- E. Supporting the City in execution of the **public engagement program**;
- F. Providing comments about the hazards, risks, actions, and context of Cottage Grove (plan components) during the plan update and prior to the **adoption** process; and
- G. Supporting other Project work assigned by Exhibit A: Scope of Work.

City of Cottage Grove Natural Hazards Advisory Committee (HMAC) 20

20

Why document cost share?

- The FEMA grant requires 25% cost share.
- DLCD cannot cover the cost share with state funds.
- ***Jurisdictions that want FEMA to approve their NHMP must show significant participation in the planning process. Cost share documentation is the best way to demonstrate participation.***

Requested Information

Cost Share

21

What is needed for cost share?

- Date, Activity, Amount of Time
- Name, Date, SIGNATURE
- One person per form (because everyone needs to sign for themselves).

Requested Information

Cost Share

22

“BOX” INSTEAD OF FTP

- Use Box to download plan drafts or upload documents like source material.
- Find the 2017 Plan and 2022 Plan Drafts on Box.
- Use it to edit or upload documents:
 - Download and edit and then upload with the same name.
OR
 - Edit without Box Tools using Microsoft 365.
- If you need to invite anyone else to the Cottage Grove Box folder, let us know and we will send an invite!

Introduction to Box

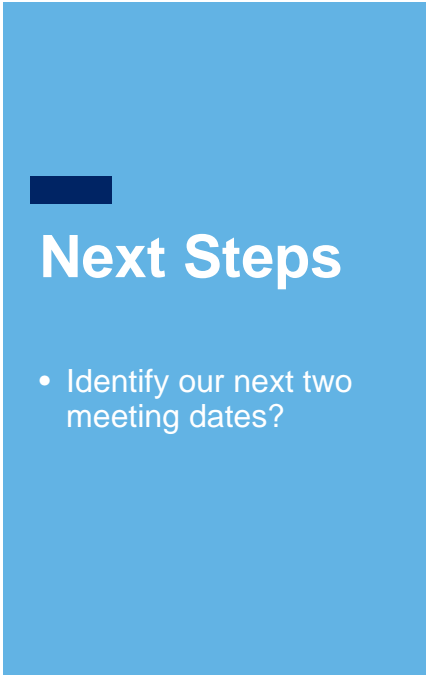
23

Public Comment and Questions

City of Cottage Grove Natural Hazards Advisory Committee (HMACH)

24

24



Next Steps

- Identify our next two meeting dates?

- Last week of February:
 - Wed. 2/23
 - Thurs. 2/24
 - Fri. 2/25 (except 11-12)
- Third week of March:
 - Wed. 3/16
 - Thurs. 3/17
 - Fri. 3/18

City of Cottage Grove Natural Hazards Advisory Committee (HMAC) 25