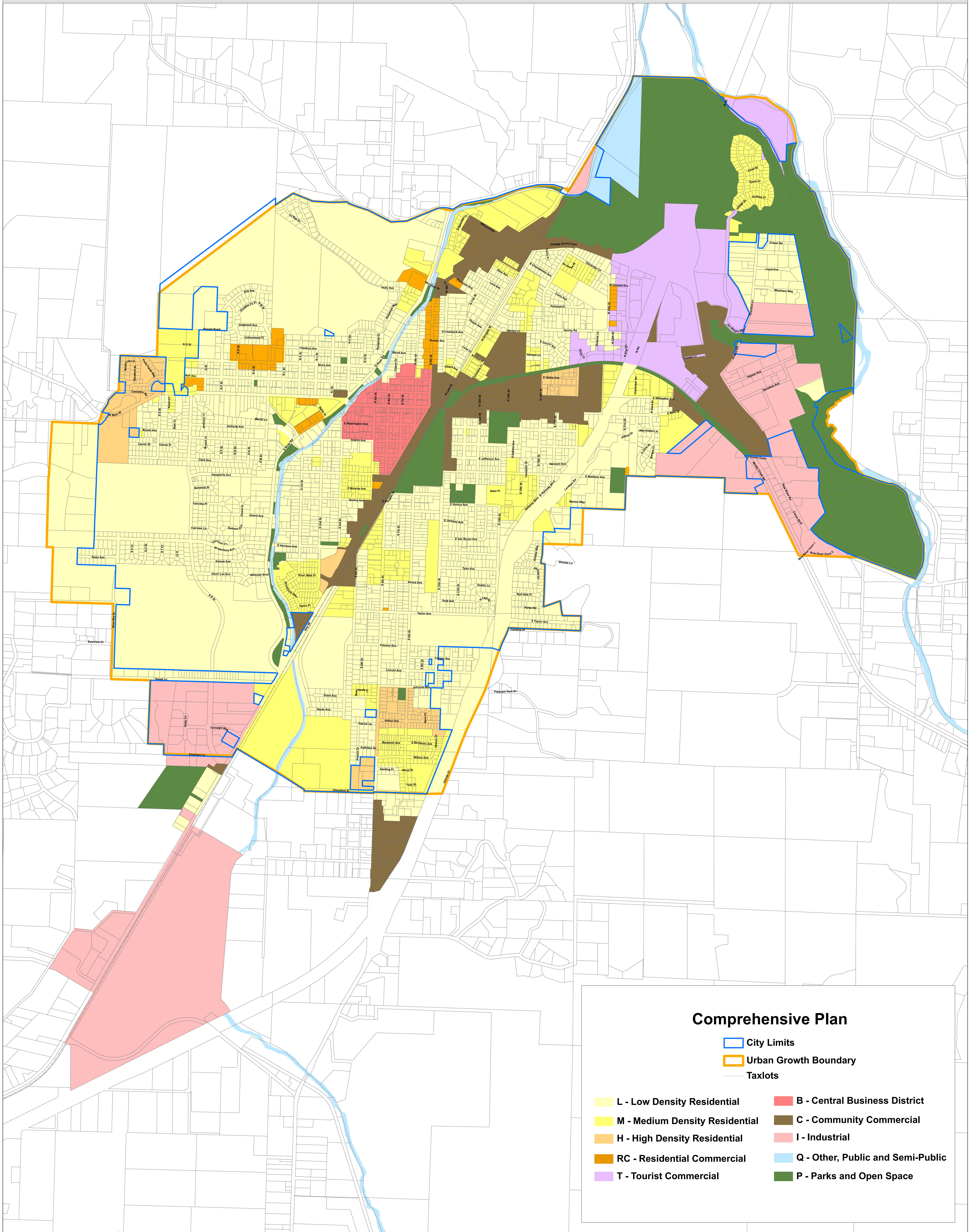


# Cottage Grove Comprehensive Plan



## Comprehensive Plan

- City Limits
- Urban Growth Boundary
- Taxlots

- |   |  |
|---|--|
| <span style="display: inline-block; width: 15px; height: 10px; background-color: #ffffcc; border: 1px solid black; margin-right: 5px;"></span> L - Low Density Residential    | <span style="display: inline-block; width: 15px; height: 10px; background-color: #ff0000; border: 1px solid black; margin-right: 5px;"></span> B - Central Business District     |
| <span style="display: inline-block; width: 15px; height: 10px; background-color: #ffff00; border: 1px solid black; margin-right: 5px;"></span> M - Medium Density Residential | <span style="display: inline-block; width: 15px; height: 10px; background-color: #800000; border: 1px solid black; margin-right: 5px;"></span> C - Community Commercial          |
| <span style="display: inline-block; width: 15px; height: 10px; background-color: #ffa500; border: 1px solid black; margin-right: 5px;"></span> H - High Density Residential   | <span style="display: inline-block; width: 15px; height: 10px; background-color: #ffb6c1; border: 1px solid black; margin-right: 5px;"></span> I - Industrial                    |
| <span style="display: inline-block; width: 15px; height: 10px; background-color: #ff8c00; border: 1px solid black; margin-right: 5px;"></span> RC - Residential Commercial    | <span style="display: inline-block; width: 15px; height: 10px; background-color: #add8e6; border: 1px solid black; margin-right: 5px;"></span> Q - Other, Public and Semi-Public |
| <span style="display: inline-block; width: 15px; height: 10px; background-color: #800080; border: 1px solid black; margin-right: 5px;"></span> T - Tourist Commercial         | <span style="display: inline-block; width: 15px; height: 10px; background-color: #008000; border: 1px solid black; margin-right: 5px;"></span> P - Parks and Open Space          |