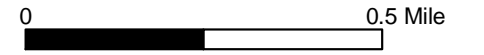


Relative Earthquake Hazard Zones in Cottage Grove



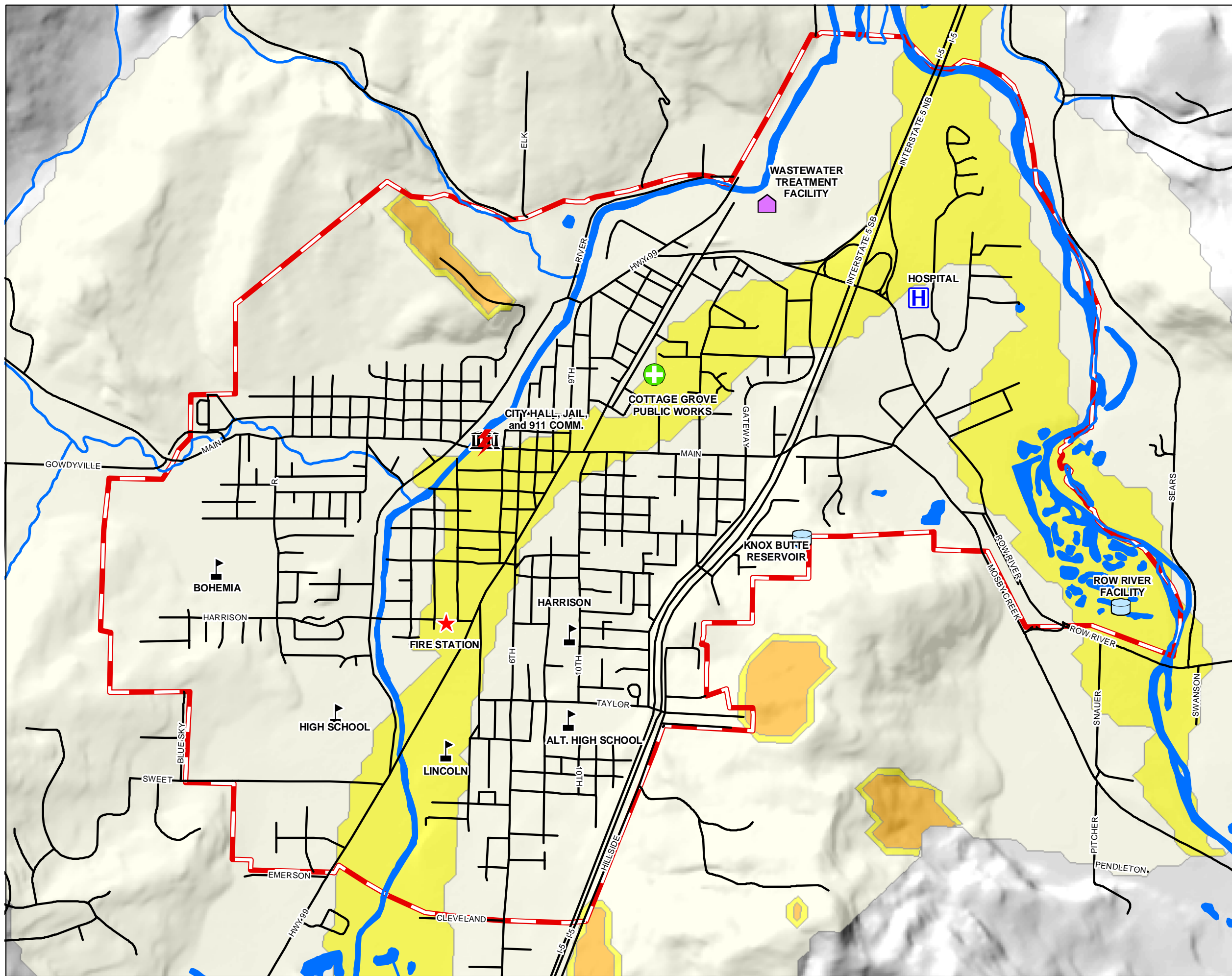
Legend

- 911 Comm. Centers
- Hospitals and Urgent Care
- Schools
- Fire Stations
- Jails, Police Depts., City Halls
- Public Water Treatment/Storage
- Municipal Wastewater Facility
- Public Works Shops
- Urban Growth Boundary
- Rivers and Streams (USGS)

RELATIVE EARTHQUAKE HAZARD ZONES

- Zone B - Intermediate to high hazard
- Zone C - Low to intermediate hazard
- Zone D - Lowest hazard

From: Relative Earthquake Hazard Maps of Selected Urban Areas in Western Oregon (IMS-9 Ore. Dept. of Geology and Mineral Industries)



Maps produced for City of Cottage Grove, by Lane Council of Governments, under a grant from the Federal Emergency Management Agency.