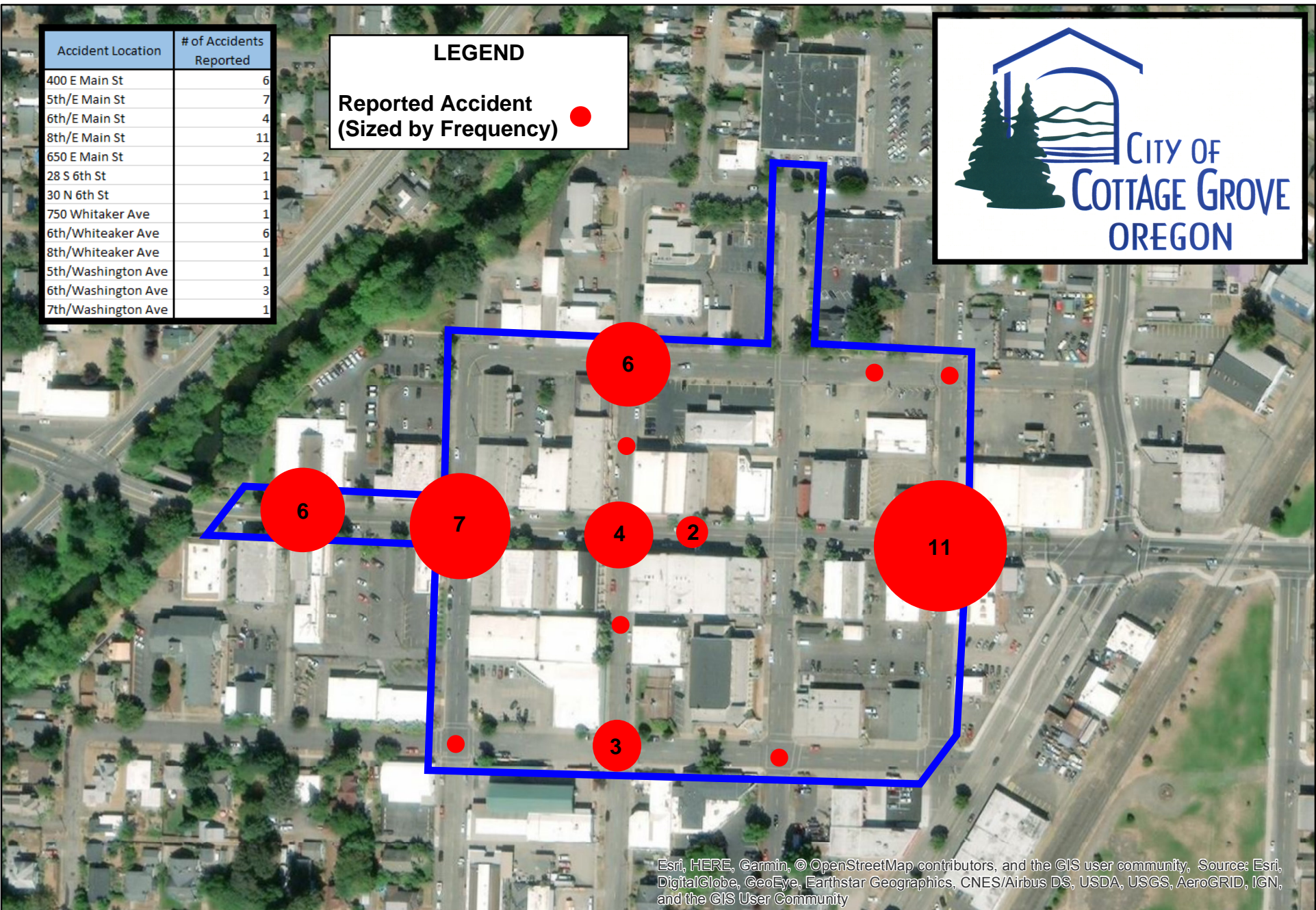




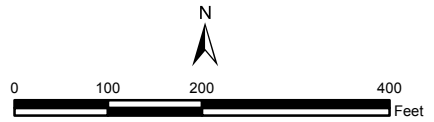
Accident Location	# of Accidents Reported
400 E Main St	6
5th/E Main St	7
6th/E Main St	4
8th/E Main St	11
650 E Main St	2
28 S 6th St	1
30 N 6th St	1
750 Whitaker Ave	1
6th/Whiteaker Ave	6
8th/Whiteaker Ave	1
5th/Washington Ave	1
6th/Washington Ave	3
7th/Washington Ave	1

LEGEND
 Reported Accident
 (Sized by Frequency) ●



Esri, HERE, Garmin, © OpenStreetMap contributors, and the GIS user community, Source: Esri, DigitalGlobe, GeoEye, Earthstar Geographics, CNES/Airbus DS, USDA, USGS, AeroGRID, IGN, and the GIS User Community

The information on this map was derived from digital databases on the Lane County regional geographic information system. Care was taken in the creation of this map, but is provided "as is". Lane County cannot accept any responsibility for errors, omissions or positional accuracy in the digital data or the underlying records. Current plan designation, zoning, etc., for specific parcels should be confirmed with the appropriate agency. There are no warranties, expressed or implied, accompanying this product. However, notification of any errors will be appreciated.



Motor Vehicle Accidents Reported within Project Area 2009 - 2017