

MEMORANDUM

TO: Mayor and City Council

FROM: Faye Stewart, Public Works & Development Director

SUBJECT: APPROVAL OF TRAFFIC CONTROL IMPROVEMENTS AT N. DOUGLAS AND OSTRANDER LANE

DATE: December 7, 2022

Background

At the September 9, 2022 City Council Meeting Council Fleck reported a safety concern from a citizen regarding the intersection of N. Douglas and Ostrander Lane. The concern was regarding an accident at the intersection where a vehicle traveling north on Douglas failed to yield to traffic headed west on Ostrander Lane causing a vehicular crash in the intersection.

Currently the traffic west bound on Ostrander Lane flows into N. Douglas heading south and traffic north bound on N. Douglas flows into Ostrander Lane or can cross the three way intersection continuing north on Douglas under the I-5 Connector. City Engineer of Record Branch Engineering reviewed the intersection and crash data from 2009 to the present. Crash data shows one accident at the N. Douglas and Ostrander Lane intersection on August 16, 2022. No other accidents have been reported dating back to 2009.

Branch Engineering is recommending adding traffic control improvements to the intersection to improve the safety of motorists using the intersection. Branch recommends;

- Adding a stop sign with “Except Right Turn” to the north bound lane on N. Douglas
- A “Cross Traffic Does Not Stop” to the existing stop sign on the south bound lane on N. Douglas
- Remove on street parking on N. Douglas before the proposed new stop sign on N. Douglas.
- Install new double yellow centerline street striping as N. Douglas transitions into Ostrander Lane.
- Add a new stop bar on the south bound lane of N. Douglas where it intersects with Ostrander Lane.
- Add white lines at the intersection to improve alignment of the intersection of the south bound lane of N. Douglas and Ostrander Lane.
- Add a “Stop Ahead” advanced warning sign on the south bound lane of N. Douglas a minimum of 100 feet before the stop at N. Douglas and Ostrander.


Branch believes adding recommended improvements to the intersection of N. Douglas and Ostrander Lane will clarify turning movements at the intersection reducing potential future accidents at this intersection. This intersection has high traffic flows for events at the Western Oregon Exposition and Cottage Grove Speedway.

Recommendation

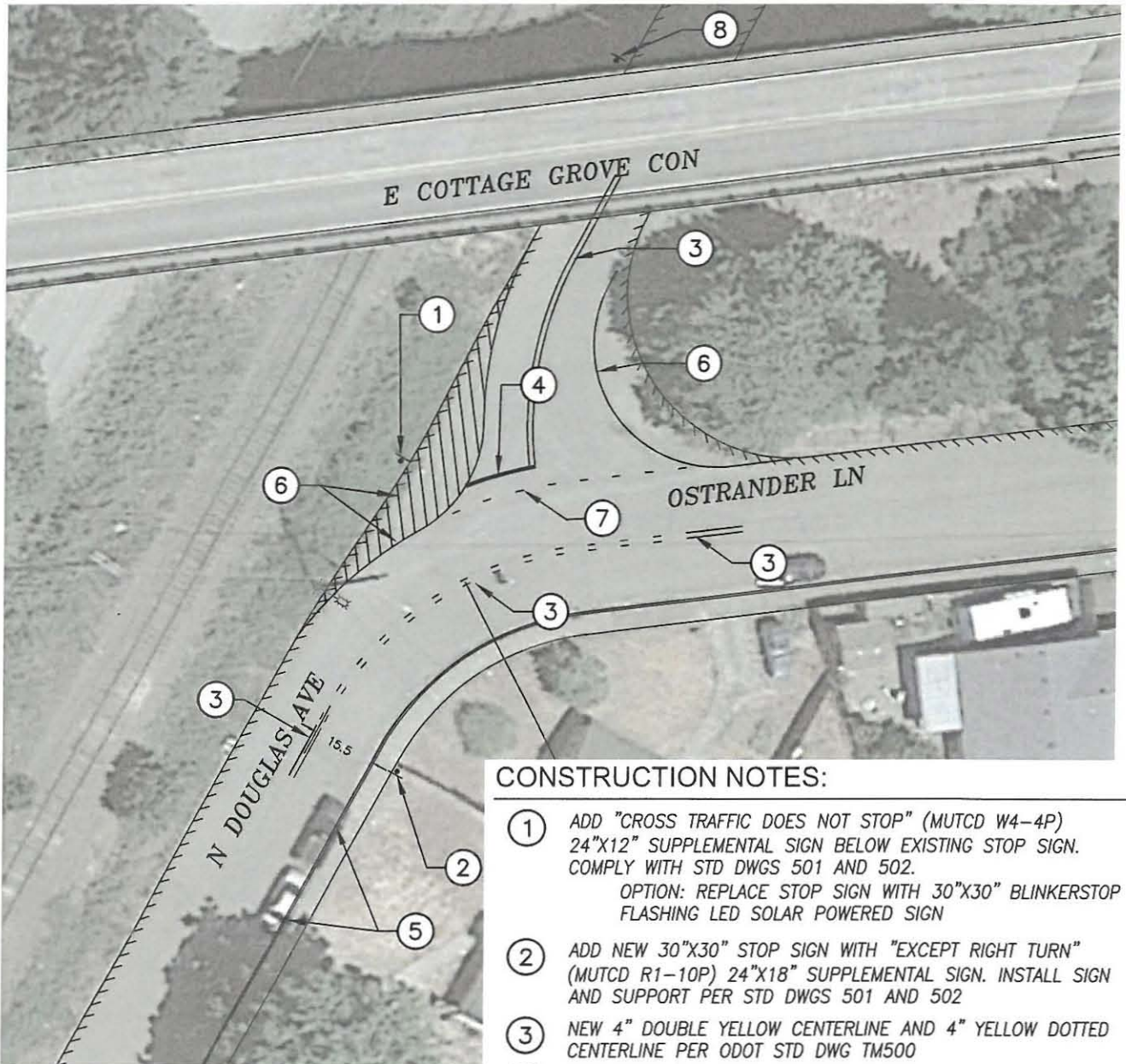
City Council to approve the recommended traffic control improvements to the intersection of N. Douglas and Ostrander Lane and direct staff to implement the changes. Attached is a map of Branch Engineering's proposed traffic control improvements.

Cost

The cost of the proposal changes is estimated to be approximately \$1,500.00 and will be paid by the Street Maintenance Fund.


Richard Meyers, City Manager


Faye Stewart, Public Works &
Development Director



CONSTRUCTION NOTES:

- ① ADD "CROSS TRAFFIC DOES NOT STOP" (MUTCD W4-4P) 24"x12" SUPPLEMENTAL SIGN BELOW EXISTING STOP SIGN. COMPLY WITH STD DWGS 501 AND 502.
OPTION: REPLACE STOP SIGN WITH 30"x30" BLINKERSTOP FLASHING LED SOLAR POWERED SIGN
- ② ADD NEW 30"x30" STOP SIGN WITH "EXCEPT RIGHT TURN" (MUTCD R1-10P) 24"x18" SUPPLEMENTAL SIGN. INSTALL SIGN AND SUPPORT PER STD DWGS 501 AND 502
- ③ NEW 4" DOUBLE YELLOW CENTERLINE AND 4" YELLOW DOTTED CENTERLINE PER ODOT STD DWG TM500
- ④ NEW 1' STOP BAR PER ODOT STD DWG TM503.
- ⑤ REMOVE ON STREET PARKING AND PAINT CURB YELLOW.
- ⑥ NEW 4" WHITE LINE PER ODOT STD DWG TM500
- ⑦ NEW 4" WHITE DOTTED LINE PER ODOT STD DWG TM500
- ⑧ ADD NEW 30"x30" STOP AHEAD ADVANCED WARNING SIGN (MUTCD W3-1). INSTALL SIGN AND SUPPORT PER STD DWGS 501 AND 502. SIGN SHALL BE MIN. 100 FEET ADVANCED OF STOP BAR AND ADVANCED OF OVERPASS BRIDGE SUPPORTS.



SCALE: 1" = 40'

COTTAGE GROVE, OR

N. DOUGLAS AVE & OSTRANDER LN

TRAFFIC CONTROL IMPROVEMENTS: OPTION 2 - REALIGNMENT NOV. 15, 2022

