

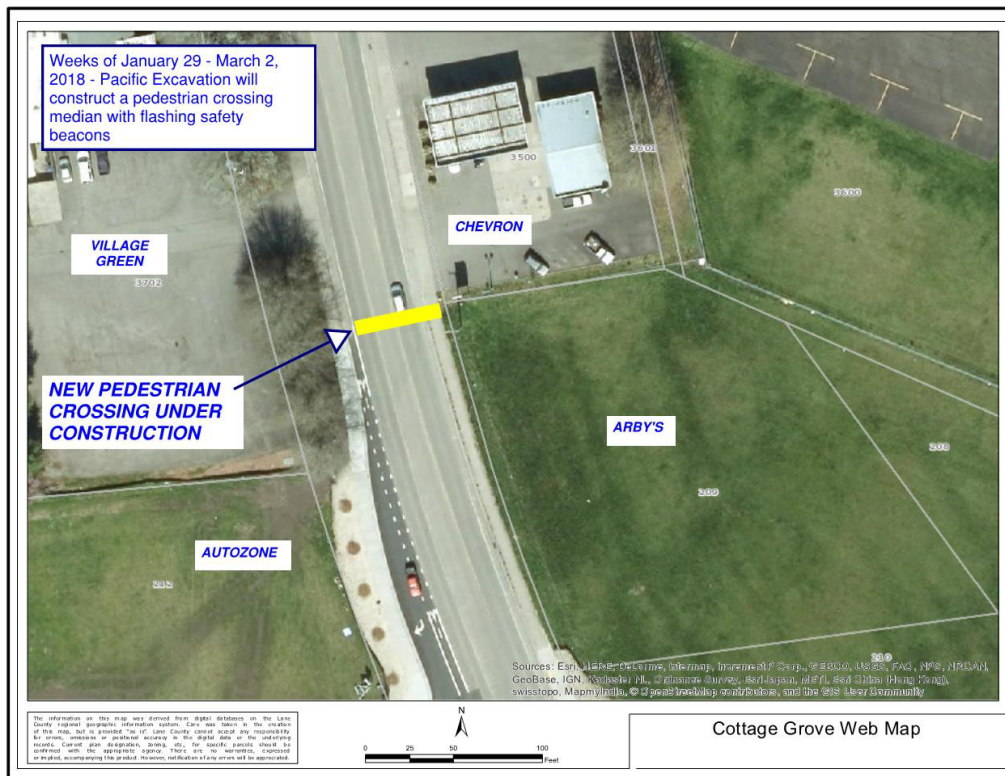
Row River Road Pedestrian Crossing

This pedestrian crossing is located on Row River Road between Chevron and Arby's and will provide a pedestrian refuge in the center turn lane and include flashing beacons to alert drivers.

The contractor, Pacific Excavation, is on schedule.

1. During the weeks of January 29 through March 2, 2018, Pacific Excavation is scheduled to complete the following, weather permitting:
 - a. Pour concrete for lighted pole foundations, sidewalks and accessible ramps, and the concrete median.
2. During the weeks of February 25, 2018, the contractor will install the poles and complete all electrical wiring.

Pedestrian access is currently maintained through the site using construction fencing with a compacted gravel surface.



Project: **5332 - N. Gateway Improvements**

Status: **Open**

Date: **1/29/2018**

Schedule No.: 1

Act ID	Description	Prior Week							Week 1							Week 2							Week 3						
		22	23	24	25	26	27	28	29	30	31	1	2	3	4	5	6	7	8	9	10	11	12	13	14	15	16	17	18
		M	T	W	T	F	S	S	M	T	W	T	F	S	S	M	T	W	T	F	S	S	M	T	W	T	F	S	S
	Lay 8" water line w/ 2" HDPE	■	■																										
	Testing of 8" water line				■	■		■																					
	Boring of 2" water, 4:00 am start		■	■	■	■																							
	Make connections to existing				■	■																							
	Backfill 8" trench with CLSM								■																				
	AC Patching trench across roadway & storm trench											■																	
	Sidewalk patch backs at water connections									■	■																		
	Driveway for reconstruction																												
	Excavate for south sidewalk ramps											■																	
	Set up & place south ADA ramp												■																
	Excavate for north ADA ramp & sidewalk												■																
	Set up & place north ADA ramp															■													
	Close Driveway																■												
	Excavate and rock new concrete roadway																■	■											
	Set up valley gutter																	■											
	Place & finish valley gutter																		■										
	Set up for driveway paving																		■	■									
	Place & finish driveway paving																						■						
	Saw cut joints																							■					
	Concrete Cure Time																							■	■	■	■		