



May 2, 2024

**PROJECT: City of Cottage Grove
Bohemia Park Expansion**

ADDENDUM #4

Branch Engineering Inc. Project No. 22-001K



EXPIRES: 12/31/24

The following clarifications and revisions for the above-referenced project are hereby incorporated by addendum to the previously issued bid documents.

Project Manual – Section 230 – Schedule of Bid Items – Revision: The attached *Addendum #4 Section 230 – Schedule of Bid Items* supersedes the previously issued Section 230 – Schedule of Bid Items in its entirety.

Project Manual – Section 230 – Schedule of Bid Items – Bid Item #41 – Revision: *The Bid Item #41 Information Plaques* has been removed, see attached Addendum #4 Section 230 – Schedule of Bid Items.

Project Manual – Section 610 – Description, Measurement and Payment of Bid Items – Revision: The attached *Addendum #4 Section 610 – Description, Measurement and Payment of Bid Items* supersedes the previously issued Section 610 – Description, Measurement and Payment of Bid Items in its entirety.

Plans – Sheets C100, C201, C400, C402, SP1.1, and SP1.2– Revision: The attached plan sheets C100, C201, C400, C402, SP1.1, and SP1.2 supersede the previously issued sheets C100, C201, C400, C402, SP1.1, and SP1.2 in their entirety.

Plans – Sheet ADD4– Addition: The attached plan sheet ADD4 is included as part of Addendum #4.

Contractor Question – Resinous flooring in the restroom is called out on A301 note D. We are not able to find any specification for this material. Can the team provide specific information about this finish material? **Clarification:** Please **DELETE** Restroom Note “D” from sheet A301, and refer to Room Finish Schedule on sheet A601 for restroom floor finishes.

Contractor Question – In 10 14 63 Color LED Sign 1.3 Section Includes notes LED display Board, and LED message centers. Is LED message centers in 10 14 63 1.3 B to indicate there are other LED displays or message centers in addition to the display board on the water tower? **Clarification:** Please **DELETE** 101463 1.3.A “LED Display Board” and **REPLACE** with “LED Display Board (a.k.a. LED message centers).” Please **DELETE** 101463 1.3.B “LED message centers” and **REPLACE** with “Not used.” The LED Display Board shown in 5/WT101 is the only LED Display Board of its type included in section 101463. The manufacturer of this product may use the term LED Message Center, in some cases. The terms are interchangeable for the purpose of this contract.

Contractor Question – The 2x8 tight knot cedar fascia on the water tower seems like it would need relief cuts to follow the radius of the structure. Note on drawing WT501 states that optional relief cuts are only for trim pieces hidden from view. Would relief cuts be allowed on the fascia in this case?

Clarification: Relief cuts will not be allowed on elements exposed to view. If they are deemed to be necessary by the bidders chosen means & methods of installation, then a flashing or other trim should be included in the bid proposal. Alternate products may be submitted during construction as per the specified process for Substitutions or Alternates.

Contractor Question – Is 08 31 00 Access Doors and Panels pertaining to the hatch in the water tower? If so, should the water tower access hatch be exterior grade and insulated? What are the security requirements for the hatch. **Clarification:** The Water Tower access door is included in 083100. The access door should be considered “exterior grade” as it is located in the exterior envelope. However, it does not need to be insulated, as the water tower is not a conditioned space. Security requirements are specified in 083100 2.1.B.6.b. We would like a concealed hinge and keyed lock/latch.

Contractor Question – Is the gypsum board ceiling attached to structure in the Valve/Storage room? **Clarification:** Please refer to detail 4/A501 for the Roof Assembly. **REMOVE** note reading “5/8” MOLD RESIST GYP. BD. (1X T&G DF AT OVERHANGS)”. **REPLACE** with note reading “5/8” MOLD RESIST GYP. BD. (1X T&G DF AT RESTROOM CEILINGS & OVERHANGS).”

Contractor Question – Is there a fourth area drain in the splash area that is not shown on SP1.2 as shown on the C and L drawings? **Clarification:** There are 4 box drains in a row, three of them are shown on Rain Decks plans and the additional one to the north on the L & C drawings. Please see the updated SP1.2 drawings included in Addendum #4 for clarification. The 4 box drains will be provided by the Owner, to be installed by the Contractor.

Contractor Question – Details 1 & 2 on C400 show non-reinforced concrete with tooled joints with no sealant for all the site concrete, detail 1 & 2 on S501 show saw cut and sealed joints for the bathroom slab only, is that correct? **Clarification:** Details 1 & 2 on Sheet C400 are general details for site Concrete Paving and Decorative Concrete. There is no joint sealant specified for tooled contraction (a.k.a. control) joints. Concrete Paving and Decorative Concrete joint types shall be per the details listed above and Section 700 - 321313.3.5 & 321316.3.2.D. Please note that contraction joints in Stamped Decorative Concrete are specified to be scored with diamond blade and rinsed clean. Therefore, please **ADD** the following note to Detail 1 & 2 on Sheet C400. "Note: Control joints as specified EXCEPT at Stamped Decorative Concrete. See Specification Section 700 - 321316.3.2.D. See Section 700 - 321313.3.5 for additional information regarding other joint types." Structural sheets beginning with the letter designation "S" are considered Structural Sheets and are specific to building structures. The concrete for structures shall be per Section 700 - 033000 Cast-in-Place Concrete. The details shown on Sheet S501 do not apply to Concrete Paving or Decorative Concrete.

Contractor Question – “Concrete notes” on SP1.1 call for rebar or wire mesh, is this for the entire splash play area? Is the splash play area 15’ x 55’ or 15’ x 70’ long as dimensioned on SP1.1? **Clarification:** Splash Pad area is 15’ x 70’, the Rain Deck plans have been amended and are included in Addendum #4. The Splash Pad area is reinforced per the splash pad plans.

Contractor Question – Is the splash play area concrete paid by the square foot under the colored concrete bid item or is it incidental to bid item 49? **Clarification:** The splash pad concrete is colored concrete and will be paid by the square foot of Bid item #21 *Concrete Walk, Colored 4-inch Thick Concrete Pavement*, the reinforcement in the splash pad will be paid by the Bid Item #49 *Splash Pad Plumbing and Installation of features* and per Section 610.

Contractor Question – Is there a water line connection to the water tank? SP1.2 shows a “1” line to rail car filler feature” but no detail for connection to the water tank. **Clarification:** There is a water supply line to the interior space of the water tank. There is also piping and a connection to the water feature supplied by Rain Deck. We have very limited information on the water feature and its connection, but the depiction in the WT plan sheets should be fairly accurate. The connection to the water feature will be a typical plumbing fitting or threaded connection. Additional information is included in this addendum to show how the water line traverses from the ground level to the interior space of the water tower. Please see the ADD4 Drawing included in this addendum for additional information.

Contractor Question – Detail RDS394-0 on SP2.1 shows a RR crossing sign, where does it go? Is there only 1? Are these what’s shown on SP1.2 in the splash play area? Are these furnished by Rain Deck?

Clarification: These are included in the Rain Deck items purchased and supplied by the City, for the contractor to install, there are two of them. Please see the invoice of items included in Addendum #3 from Rain Deck, RDS394-0 Rain Deck SS Railroad Crossing (RDS394-0) w/ SS Footing Bases (RDS399-0).

Contractor Question – Irrigation plans call for all control valves to be designated as reclaimed water. Do any irrigation components need to be purple (reclaimed)? **Clarification:** Provide Pro-Spray Reclaimed factory-installed purple reclaimed caps at all Pro-Spray heads and provide 1800-NPCAP Purple Covers at all 1800 Series heads.

Contractor Question – Bid item 16 Adjust meter and Valve Boxes – I am only seeing one meter to be adjusted on sheet C301 note 150-U. Can you confirm quantities for this item or identify notes for additional adjustments. **Clarification:** There are seven total of water meters and valves that need to be adjusted per Plan sheet C100 Existing Conditions and Demo Plan, see construction notes notes 105 and 114 on this plan sheet and sheet C100 included in this addendum.

Contractor Question – Sheet C301 has a note on the North West ADA ramp calling to “Install Crosswalk Closure Support Detail per RD913 Sheet C402” There is no bid item for this work. Is this incidental to the signs and striping bid item? **Clarification:** Yes, the construction and installation of the Crosswalk closure sign and support is incidental to Bid item #29 *Signs and Striping (including removal and relocation of permanent and temporary signs)*.

Contractor Question – Bid item 41 information plaques. I do not see a detail for this item. Is there a detail for this item or a spec section callout? **Clarification:** Bid item #41 has been removed from the Schedule of Bid Items, see the Addendum #4 revised Schedule of Bid Items.

Contractor Question – For the playground surfacing, there is no structure detail noting what materials go underneath of the wood fibers? Is there a drain material or soil material that needs to go under the wood fibers? **Clarification:** Detail 6/L300 in the Landscape drawings shows the drain course and subgrade section for the play area and detail 2/C200 in the Civil set calls out the drain rock specified.

End of Addendum #4

SECTION 230

SCHEDULE OF BID ITEMS

ITEM No. ODOT SPEC	ITEM DESCRIPTION	QTY	UNIT	UNIT COST	TOTAL BID PRICE
1 210	Mobilization, Bonds, And Insurance	1	Lump Sum	\$	\$
2 225	Temporary Work Zone Traffic Control, Complete	1	Lump Sum	\$	\$
3 280	Erosion and Sediment Control	1	Lump Sum	\$	\$
4 305	Construction Survey Work	1	Lump Sum	\$	\$
5 320	Removal of Existing Tree and Root Ball, Complete	1	Lump Sum	\$	\$
6 310	Saw Cutting (Includes second cut)	195	Foot	\$	\$
7 320	Clearing and Grubbing	4	Lump Sum	\$ X	\$ X
7	Electrical Conduit and Transformer Vault, Pad, & Bollards: Equipment and Installation	1	Lump Sum	\$	\$
8 330	General Excavation	620	Cubic Yard	\$	\$
9 350	Subgrade Geotextile	104	Square Yard	\$	\$
10 445	4-Inch Sanitary Sewer Pipe, Class B Backfill, Depth TBD	228	Foot	\$	\$
11 445	4-inch Sanitary Sewer Cleanout Assembly	3	each	\$	\$
12 445	4-Inch Stormwater Pipe, Class B Backfill, 1 - 5 Foot Depth	185	Foot	\$	\$
13 445	4-inch Stormwater Cleanout Assembly	3	each	\$	\$
14 445	Area Drain assembly per detail 3 on sheet C402	3	each	\$	\$
15 445	Downspout connection assembly per detail 4 on sheet C402	2	each	\$	\$
16 490	Adjust Meter and Valve Boxes	7	each	\$	\$

17 445	Pothole Existing Utility	2	each	\$	\$
18 641	Aggregate Base - 3/4" Minus Quarry Rock	376	Ton	\$	\$
19 745	Level 2, 1/2" Dense HMAC, including pavement repair areas	22	Ton	\$	\$
20 759	Concrete Walk, 4-Inch Thick Concrete Pavement	8,092	Square Foot	\$	\$
21 759	Concrete Walk, Colored 4-Inch Thick Concrete Pavement	3,120	Square Foot	\$	\$
22 759	Concrete Walk, Stamped 4-Inch Thick Concrete Pavement	1,070	Square Foot	\$	\$
23 759	Concrete Walk, 6-inch Thick PCC	320	Square Foot	\$	\$
24 759	Concrete ADA Parking Stall and Aisle, 8-inch Thick PCC	352	Square Foot	\$	\$
25 759	Concrete Curb & Gutter, including incidental steel reinforcement at matchlines	72	Foot	\$	\$
26 759	Concrete Standard Curb, including incidental steel reinforcement at matchlines	56	Foot	\$	\$
27 759	Concrete "V" Type gutter (symmetrical), including incidental steel reinforcement at matchlines	48	Foot	\$	\$
28 759	Truncated Dome Texturing	67	Square Foot	\$	\$
29 860	Signs and Striping (including removal and relocation of permanent and temporary signs)	1	Lump Sum	\$	\$
30 962	Light Post Foundation	12	Each	\$	\$
31 970	Illumination Appartenances, Conduit, and Junction Boxes	1	Lump Sum	\$	\$
32 1010	Infiltration Rain Garden per detail 1 on sheet C200 and details 5 & 6 on sheet C402, two facilities total	1	Lump Sum	\$	\$
33 1010	Soakage Trench per detail 2 on sheet C200, one facility total	1	Lump Sum	\$	\$
34 1030	Landscaping (installation of groundcover, shrubs and trees) and Irrigation	1	Lump Sum	\$	\$
35	Concrete Containment Edge per detail 6 on sheet L600-L300	73	Square Foot	\$	\$
36	Concrete Mow Edge per detail 7 on sheet L600-L300	222	Foot	\$	\$

37	Playground – Swing: Installation, Surfacing, Sub-base & Drainage	1	Lump Sum	\$	\$
38	Concrete Base for Art	5	Each	\$	\$
39	Basalt Columns on Concrete Base	5	Each	\$	\$
40	Skate Deterrents	40	Each	\$	\$
41	Information Plaques	5	Each	\$ X	\$ X
42	Concrete Seatwall	15	Foot	\$	\$
43	Basalt Bench	5	Each	\$	\$
44	Bench - Installation	15	Each	\$	\$
45	Litter Receptacles: Equipment and Installation	2	Each	\$	\$
46	Bike Rack: Equipment and Installation	5	Each	\$	\$
47	Water Tower Building (complete)	1	Lump Sum	\$	\$
48	Restroom Building (complete)	1	Lump Sum	\$	\$
49	Splash Pad Plumbing and installation of features	1	Lump Sum	\$	\$
50	Rail Electric Service Cabinet: Relocation and Installation	1	Lump Sum	\$	\$
51	Removal and Reinstallation of Bench	1	Each	\$	\$
BID TOTAL					

Total Amount of Base Bid \$ _____

Total Base Bid price written out in words

Note: All Unit Price Bids should be considered as “Furnished and Installed”. Billing is to be as complete units and partial bills will not be paid.

To Be Considered Responsive, the following must be signed and completed by your firm:

We hereby certify to do the work as specified and at the price as quoted in conformance to all the City, State and Federal Regulations that are applicable and will indemnify the ‘City of Cottage Grove’ against all claims arising out of any actions caused by our company during the performance of this contract.

We hereby certify that we will comply with the provisions of ORS279C.840 (BOLI Wage Requirements).

Company _____

Address _____

By _____
(Signature of Authorized Official)

Date _____

By _____
(Type or Print Name)

Phone _____

Federal I.D. # _____

Fax _____

Surety Company (Performance Bond) _____

Contact at Surety _____ Phone _____

CCB# _____ No. Years Registered w/CCB _____

Are there any outstanding claims against your firm: Yes_____ No_____

Protest of Contractor Selection/Contract Award must be made by Written Notice within Five (5) Days of the Posted Award Date in accordance with OAR 137-049-0450

All the prospective bidders will have specific line items to bid on and the award will be made on the lowest qualified bid on the total bid items. The City will reserve the right to add or delete items as the project goes forward.

- 1. Liquidated Damages: See General Conditions Section 450, item 5.3.
- 2. Please invoice referencing the above exact line-item numbers and line items. All quantities must be approved by the Project Engineer before invoicing.

SECTION 610

DESCRIPTION, MEASUREMENT AND PAYMENT OF BID ITEMS

Cottage Grove Bohemia Park Expansion

All number references in these Special Provisions shall be understood to refer to the bid schedule item number as shown in Section 230 of this document.

1. MOBILIZATION, BONDS, AND INSURANCE

Payment for mobilization will be made at the Contract lump sum amount for Bid Item 1.

The amounts paid for mobilization in the Contract progress payment will be based on the percent of the original Contract Amount that is earned from other Contract items, not including advances on Materials, and as follows:

- When 5 percent is earned, either 50 percent of the amount for mobilization or 5 percent of the original Contract Amount, whichever is the least.
- When 10 percent is earned, either 100 percent of mobilization or 10 percent of the original Contract Amount, whichever is the least.
- When all Work is completed, amount of mobilization exceeding 10 percent of the original Contract Amount.

This schedule of mobilization progress payments will not limit or preclude progress payments otherwise provided by the Contract.

When the Contract Schedule of Items does not indicate payment for mobilization, no separate or additional payment will be made for mobilization. Payment will be included in payment made for the appropriate items under which this Work is required.

2. TEMPORARY WORK ZONE TRAFFIC CONTROL, COMPLETE

Payment for temporary work zone traffic control will be made at the Contract lump sum amount for Bid Item 2.

Payment will be payment in full for furnishing, installing, moving, operating, maintaining, inspecting, placing and removing all Materials and TCD, and for furnishing all equipment, labor, and incidentals necessary to complete the work as specified. Contractor to submit Quality Control Plan as required.

No separate or additional payment will be made for temporary work zone traffic control. Payment will be included in payment for the appropriate items which this work requires.

3. EROSION AND SEDIMENT CONTROL

Payment for erosion control will be made at the Contract lump sum amount for Bid Item 3.

Payment will be payment in full for furnishing, stockpiling, protecting, restocking, removing and placing all Materials; providing tree protection; restoring, mulching tacking, and seeding all disturbed ground; and furnishing all Equipment, labor, inspection and incidentals necessary to complete the work as specified. Contractor to submit Quality Control Plan as required.

No separate or additional payment will be made for erosion and sediment control. Payment will be included in payment for the appropriate items which this work requires.

4. CONSTRUCTION SURVEY WORK

The measurement for this work is lump sum for Bid Item 4. All necessary work and materials required to provide construction survey work according to the current edition on the date of Advertisement, of the ODOT "Construction Surveying Manual for Contractors" found at https://www.oregon.gov/odot/ETA/Documents_Geometronics/Construction-Survey-Manual-Contractors.pdf is incidental to this item.

No separate or additional payment will be made for construction staking and surveying. Payment will be included in payment for the appropriate items which this work requires.

5. REMOVAL OF EXISTING TREE AND ROOT BALL, COMPLETE

Payment for removal of existing tree and root ball will be made at the Contract lump sum amount for Bid Item 5.

The lump sum bid price shall be full compensation for all labor, materials, earthwork, backfill, and equipment used to complete the work as specified.

No separate or additional payment will be made for removal of existing tree and root ball. Payment will be included in payment for the appropriate items which this work requires.

6. SAW CUTTING (INCLUDES SECOND CUT)

The accepted quantities of saw cutting will be paid for at the Contract unit price, per unit of measurement lineal foot.

Payment will be payment in full for furnishing and placing all materials, and for furnishing all equipment, labor, and incidentals necessary to complete the work as specified.

No separate or additional payment will be made for saw cutting and removal or disposal Work included in Section 00330 according to 00310.02 of the Oregon Standard Specifications 2024. Payment will be included in payment for the appropriate items under which this work is required.

7. ~~CLEARING AND GRUBBING~~

~~The accepted quantities of Clearing, Grubbing, disposal, and cleanup Work will be paid for at the Contract lump sum amount for Bid Item 7.~~

~~Payment will be payment in full for furnishing all Equipment, labor, and Incidentals necessary to complete the Work as specified.~~

~~No separate or additional payment will be made for work zone fencing.~~

~~Payment will be included in payment made for the appropriate items under which this Work is required.~~

**7. ELECTRICAL CONDUIT AND TRANSFORMER VAULT, PAD, & BOLLARDS:
EQUIPMENT AND INSTALLATION**

The accepted quantities of the Electrical Conduit and Transformer Vault, Pad, & Bollards: Equipment and Installation Work will be paid for at the Contract lump sum amount for the new Bid Item 7.

Payment will be payment in full for furnishing and placing all materials, including the 4' x 6' pad mount transformer vault, installation of electrical conduits, bollards, and for furnishing all equipment, labor, and incidentals necessary to complete the work in accordance with the plans and specifications.

No separate or additional payment will be made for coordination with Pacific and Power Genesee & Wyoming Inc. and trench excavation, trench resurfacing, bedding, pipe zone material, trench backfill, other required fittings, tracer wire, and other required testing.

Payment will be included in payment made for the appropriate items under which this work is required.

8. GENERAL EXCAVATION

The quantities of general excavation will be measured on the volume basis in cubic yards of Subgrade excavated to the depth as directed by the Engineer. The volume will be determined by horizontal and vertical measurements.

The accepted quantities of general excavation will be paid for at the Contract unit price per cubic yard.

Payment will be payment in full for furnishing and placing all materials, and for furnishing all equipment, labor, and incidentals necessary to complete the work as specified. Contractor to submit Quality Control Plan as required.

Payment will be included in payment made for the appropriate items under which this work is required.

9. SUBGRADE GEOTEXTILE

The accepted quantities of subgrade geotextile will be paid for at the Contract unit price, per unit of square yard.

Payment will be payment in full for furnishing and placing all materials, and for furnishing all equipment, labor, and incidentals necessary to complete the work as specified.

No separate or additional payment will be made for subgrade geotextile. Payment will be included in payment for the appropriate items which this work is required.

10. 4-INCH SANITARY SEWER PIPE, CLASS B BACKFILL, DEPTH TBD

The accepted quantities of sanitary sewer pipe will be paid for at the Contract unit price, per unit of lineal foot.

Payment will be payment in full for furnishing and placing all materials, trench resurfacing, and for furnishing all equipment, labor, and incidentals necessary to complete the work as specified.

No separate or additional payment will be made for trench excavation, bedding, pipe zone material, trench backfill, pipe plugs, stoppers, other required fittings, tracer wire, and other required testing.

Payment will be included in payment made for the appropriate items under which this work is required.

11. 4-INCH SANITARY SEWER CLEANOUT ASSEMBLY

The accepted quantities of sanitary sewer cleanout assembly will be paid for at the Contract unit price each.

Payment will be payment in full for furnishing and placing all materials, trench resurfacing, and for furnishing all equipment, labor, and incidentals necessary to complete the work as specified.

No separate or additional payment will be made for trench excavation, bedding, pipe zone material, trench backfill, pipe plugs, stoppers, other required fittings, tracer wire, and other required testing.

Payment will be included in payment made for the appropriate items under which this work is required.

12. 4-INCH STORMWATER PIPE

The accepted quantities of stormwater pipe will be paid for at the Contract unit price, per unit of lineal foot.

Payment will be payment in full for furnishing and placing all materials, trench resurfacing, and for furnishing all equipment, labor, and incidentals necessary to complete the work as specified.

No separate or additional payment will be made for trench excavation, bedding, pipe zone material, trench backfill, pipe plugs, stoppers, other required fittings, tracer wire, and other required testing.

Payment will be included in payment made for the appropriate items under which this work is required.

13. 4-INCH STORMWATER CLEANOUT ASSEMBLY

The accepted quantities of stormwater cleanout assembly will be paid for at the Contract unit price each.

Payment will be payment in full for furnishing and placing all materials, trench resurfacing, and for furnishing all equipment, labor, and incidentals necessary to complete the work as specified.

No separate or additional payment will be made for trench excavation, bedding, pipe zone material, trench backfill, pipe plugs, stoppers, other required fittings, tracer wire, and other required testing.

Payment will be included in payment made for the appropriate items under which this work is required.

14. AREA DRAIN ASSEMBLY

The accepted quantities of area drain assembly will be paid for at the Contract unit price each.

Payment will be payment in full for furnishing and placing all materials, and for furnishing all equipment, labor, and incidentals necessary to complete the work as specified.

No separate or additional payment will be made for trench excavation, bedding, pipe zone material, trench backfill, other required fittings, tracer wire, and other required testing.

Payment will be included in payment made for the appropriate items under which this work is required.

15. DOWNSPOUT CONNECTION ASSEMBLY

The accepted quantities of downspout connection assembly will be paid for at the Contract unit price each.

Payment will be payment in full for furnishing and placing all materials, trench resurfacing, and for furnishing all equipment, labor, and incidentals necessary to complete the work as specified.

No separate or additional payment will be made for trench excavation, bedding, pipe zone material, trench backfill, pipe plugs, stoppers, other required fittings, tracer wire, and other required testing.

Payment will be included in payment made for the appropriate items under which this work is required.

16. ADJUST METER AND VALVE BOXES

The accepted quantities of adjust meter and valve boxes will be paid for at the Contract unit price each.

Payment will be payment in full for furnishing and placing all materials, and for furnishing all equipment, labor, and incidentals necessary to complete the work as specified.

No separate or additional payment will be made for adjust meter and valve boxes. Payment will be included in payment for the appropriate items under which this work is required.

17. POTHOLE EXISTING UTILITY

The accepted quantities of pothole existing utility will be paid for at the Contract unit price each.

Payment will be payment in full for furnishing and placing all materials, and for furnishing all equipment, labor, and incidentals necessary to complete the work as specified.

No separate or additional payment will be made for earthwork, backfill, protective coatings, and aggregate bases. Payment will be included in payment for the appropriate items under which this work is required.

18. AGGREGATE BASE - 3/4" MINUS QUARRY ROCK

The accepted quantities of aggregates will be paid for at the Contract unit price, per unit of measurement ton.

Payment will be payment in full for furnishing and placing all materials, and for furnishing all equipment, labor, and incidentals necessary to complete the work as specified.

No separate or additional payment will be made for water used to obtain proper compaction and in the care of the work.

The total thickness of the Gravel Paving section detail in the Base Bid is incidental to this item.

19. LEVEL 2, 1/2" DENSE HMAC

The measurement for this work is on the weight basis in Tons. No deductions will be made for asphalt cement, mineral filler, lime, anti-strip, or any other additive used in the mixture.

The accepted quantities will be paid for at the Contract unit price, per ton, for this item. Payment will be payment in full for furnishing and placing all materials, and for furnishing all equipment and labor necessary to complete the work, including pavement repair areas, as specified.

No separate or additional payment will be made for: asphalt cement, mineral filler, lime, and anti-stripping or other additives; cleaning; filling joints; and necessary testing to obtain proper compaction and in the care of the work.

20. CONCRETE WALK, 4-INCH-THICK CONCRETE

The measurement unit for this work is square feet of the finished surface. Measurement of concrete walks will include the total area of concrete walk.

All necessary work and materials ~~required to construct the aggregate base~~ in accordance with the plans and specifications for concrete walkway areas shall be incidental to this item.

No separate or additional payment will be made for necessary testing to obtain proper compaction and in the care of the work.

21. CONCRETE WALK, COLORED 4-INCH-THICK CONCRETE

The measurement unit for this work is square feet of the finished surface. Measurement of colored concrete walks will include the total area of colored concrete walk.

All necessary work and materials ~~required to construct the aggregate base~~ in accordance with the plans and specifications for colored concrete walkway areas shall be incidental to this item.

No separate or additional payment will be made for necessary testing to obtain proper compaction and in the care of the work.

22. CONCRETE WALK, STAMPED 4-INCH-THICK CONCRETE

The measurement unit for this work is square feet of the finished surface. Measurement of stamped concrete walks will include the total area of stamped concrete walk.

All necessary work and materials ~~required to construct the aggregate base~~ in accordance with the plans and specifications for stamped concrete walkway areas shall be incidental to this item.

No separate or additional payment will be made for necessary testing to obtain proper compaction and in the care of the work.

23. CONCRETE WALK, 6-INCH-THICK CONCRETE

The measurement unit for this work is square feet of the finished surface. Measurement of concrete walks will include the total area of concrete walk.

All necessary work and materials ~~required to construct the aggregate base~~ in accordance with the plans and specifications for concrete walkway areas shall be incidental to this item.

No separate or additional payment will be made for necessary testing to obtain proper compaction and in the care of the work.

24. CONCRETE ADA PARKING STALL & ACCESS AISLE, 8-INCH-THICK PCC

The measurement unit for this work is square feet of the finished surface. Measurement of 8-inch concrete pad will include the total area of concrete pad.

All necessary work and materials ~~required to construct the aggregate base~~ in accordance with the plans and specifications shall be incidental to this item.

No separate or additional payment will be made for necessary testing to obtain proper compaction and in the care of the work.

25. CONCRETE CURB & GUTTER

The accepted quantities of concrete curb & gutter will be paid for at the Contract unit price, per unit of measurement lineal foot.

Payment will be payment in full for furnishing and placing all materials, including steel reinforcement at matchlines, and for furnishing all equipment, labor, and incidentals necessary to complete the work as specified.

No separate or additional payment will be made for the construction of this bid item. Payment will be included in payment for the appropriate items under which this work is required.

26. CONCRETE STANDARD CURB

The accepted quantities of standard curb will be paid for at the Contract unit price, per unit of measurement lineal foot.

Payment will be payment in full for furnishing and placing all materials, including steel reinforcement at matchlines, and for furnishing all equipment, labor, and incidentals necessary to complete the work as specified.

No separate or additional payment will be made for the construction of this bid item. Payment will be included in payment for the appropriate items under which this work is required.

27. CONCRETE "V" TYPE GUTTER

The accepted quantities of "V" type gutter will be paid for at the Contract unit price, per unit of measurement lineal foot.

Payment will be payment in full for furnishing and placing all materials, including steel reinforcement, and for furnishing all equipment, labor, and incidentals necessary to complete the work as specified.

No separate or additional payment will be made for the construction of this bid item. Payment will be included in payment for the appropriate items under which this work is required.

28. TRUNCATED DOME TEXTURING

The measurement unit for this work is square feet of the finished surface. Measurement of truncated dome texturing will include the total area of this bid item.

All necessary work and materials required to install the truncated dome texturing in accordance with the plans and specifications shall be incidental to this item.

29. SIGNS AND STRIPING

The measure for this work is lump sum. All necessary work and materials, including the construction of sign foundation and installation of sign pole, required to provide signing and striping, removal and relocation of permanent and temporary signs as shown on the plans is incidental to this bid item.

30. LIGHT POST FOUNDATION

The accepted quantities of light post foundation will be paid for at the Contract unit price each.

Payment will be payment in full for furnishing and placing all materials, compensation for all labor, materials, furnishing all equipment, and incidentals necessary to complete the work specified.

No separate or additional payment will be made for the construction of light post foundation. Payment will be included in payment for the appropriate items which this work requires.

31. ILLUMINATION APPURTENANCES, CONDUIT, AND JUNCTION BOXES

The accepted quantities of illumination appurtenances, conduits, and junction boxes will be paid for at the Contract lump sum.

Payment will be payment in full for furnishing and placing all materials, compensation for all labor, materials, furnishing all equipment, and incidentals necessary to complete the work specified.

No separate or additional payment will be made for the illumination appurtenances, conduits, and junction boxes. Payment will be included in payment for the appropriate items which this work requires

32. INFILTRATION RAIN GARDEN, TWO FACILITIES

Payment for infiltration rain garden will be made at the Contract lump sum amount

The lump sum bid price shall be full compensation for furnishing and placing all materials, compensation for all labor, materials, and equipment used to construct the following:

- Infiltration Rain Garden, two facilities, in accordance with the plans and specifications.

No separate or additional payment will be made for the aggregate, growing medium soil, geotextile filter fabric, rock mulch, and planting necessary for the construction of this bid item.

Payment will be included in payment for the appropriate items which this work requires

33. SOAKAGE TRENCH

Payment for soakage trench will be made at the Contract lump sum amount

The lump sum bid price shall be full compensation for all labor, materials, and equipment used to construct the following:

- Soakage Trench in accordance with the plans and specifications.

No separate or additional payment will be made for the aggregate, growing medium soil, geotextile filter fabric, and incidentals necessary to complete the work specified.

Payment will be included in payment for the appropriate items which this work requires

34. LANDSCAPE AND IRRIGATION

Payment for Landscape and Irrigation will be made at the Contract lump sum amount.

Payment will be payment in full for furnishing and placing all materials, compensation for all labor, materials, including planting, furnishing all equipment, and incidentals necessary to complete the work in accordance with the plans and specifications.

No separate or additional payment will be made for Landscape and Irrigation. Payment will be included in payment for the appropriate items which this work requires.

35. CONCRETE CONTAINMENT EDGE

The measurement unit for this work is square feet of the finished surface. Measurement of the concrete containment edge will include the total area of this bid item.

All necessary work and materials, including steel reinforcement, required to install the concrete containment edge in accordance with the plans and specifications shall be incidental to this item.

36. CONCRETE MOW EDGE

The accepted quantities of concrete mow edge will be paid for at the Contract unit price, per unit of measurement lineal foot.

Payment will be payment in full for furnishing and placing all materials, including steel reinforcement, and for furnishing all equipment, labor, and incidentals necessary to complete the work as specified.

No separate or additional payment will be made for concrete mow edge. Payment will be included in payment for the appropriate items under which this work is required.

37. PLAYGROUND - SWING: INSTALLATION, SURFACING, SUB-BASE & DRAINAGE

Payment for the installation of the Playground and swing equipment, construction of playground surfacing, sub-base & drainage will be made at the Contract lump sum amount.

The lump sum bid price shall be full compensation for all labor, materials, including aggregate, play area surfacing material and filter fabric, and equipment used to construct the following:

- Playground and Swing equipment installation.
- Surfacing and sub-base of Playground and Swing area.
- ~~Soakage Trench installation in accordance with the plans and specifications.~~

No separate or additional payment will be made for the installation of the Playground and swing equipment, construction of playground surfacing, sub-base & drainage. Payment will be included in payment for the appropriate items under which this work is required.

38. CONCRETE BASE FOR ART

The accepted quantities of concrete base for art will be paid for at the Contract unit price each.

Payment will be payment in full for furnishing and placing all materials, compensation for all labor, materials, including steel reinforcement, furnishing all equipment, and incidentals necessary to complete the work in accordance with the plans and specifications.

No separate or additional payment will be made for the construction of concrete base for art. Payment will be included in payment for the appropriate items which this work requires.

39. BASALT COLUMNS ON CONCRETE BASE

The accepted quantities of basalt columns on concrete base will be paid for at the Contract unit price each.

Payment will be payment in full for furnishing and placing all materials, compensation for all labor, materials, including steel reinforcement, furnishing all equipment, and incidentals necessary to complete the work in accordance with the plans and specifications.

No separate or additional payment will be made for the construction of basalt columns on concrete base. Payment will be included in payment for the appropriate items which this work requires.

40. SKATE DETERRENT

The accepted quantities of skate deterrent will be paid for at the Contract unit price each.

Payment will be payment in full for furnishing and placing all materials, compensation for all labor, materials, furnishing all equipment, and incidentals necessary to complete the work in accordance with the plans and specifications.

No separate or additional payment will be made for the installation of skate deterrent. Payment will be included in payment for the appropriate items which this work requires.

41. ~~INFORMATION PLAQUE~~

~~The accepted quantities of information plaque will be paid for at the Contract unit price each.~~

~~Payment will be payment in full for furnishing and placing all materials, compensation for all labor, materials, furnishing all equipment, and incidentals necessary to complete the work in accordance with the plans and specifications.~~

~~No separate or additional payment will be made for the installation of information plaque. Payment will be included in payment for the appropriate items which this work requires.~~

42. CONCRETE SEATWALL

The accepted quantities of concrete seatwall will be paid for at the Contract unit price, per unit of measurement lineal foot.

Payment will be payment in full for furnishing and placing all materials, including steel reinforcement, and for furnishing all equipment, labor, and incidentals necessary to complete the work in accordance with the plans and specifications.

No separate or additional payment will be made for concrete seatwall. Payment will be included in payment for the appropriate items under which this work is required.

43. BASALT BENCH

The accepted quantities of basalt bench will be paid for at the Contract unit price each.

Payment will be payment in full for the installation, compensation for all labor, materials, furnishing all equipment, and incidentals necessary to complete the work in accordance with the plans and specifications.

No separate or additional payment will be made for the construction of basalt bench. Payment will be included in payment for the appropriate items which this work requires.

44. BENCH INSTALLATION

The accepted quantities of bench installation will be paid for at the Contract unit price each.

Payment will be payment in full for the installation of this bid item, compensation for all labor, materials, coordination with the city of Cottage Grove and incidentals necessary to complete the work in accordance with the plans and specifications. Coordination with the City of Cottage Grove to receive the bench is incidental to this bid item.

No separate or additional payment will be made for bench installation. Payment will be included in payment for the appropriate items which this work requires.

45. LITTER RECEPTACLES

The accepted quantities of litter receptacles will be paid for at the Contract unit price each.

Payment will be payment in full for furnishing and placing all materials, compensation for all labor, materials, furnishing all equipment, and incidentals necessary to complete the work in accordance with the plans and specifications.

No separate or additional payment will be made for litter receptacles. Payment will be included in payment for the appropriate items which this work requires.

46. BIKE RACK EQUIPMENT AND INSTALLATION

The accepted quantities of bike rack equipment and installation will be paid for at the Contract unit price each.

Payment will be payment in full for furnishing and placing all materials, compensation for all labor, materials, furnishing all equipment, and incidentals necessary to complete the work in accordance with the plans and specifications.

No separate or additional payment will be made for bike rack equipment and installation. Payment will be included in payment for the appropriate items which this work requires.

47. WATER TOWER BUILDING (COMPLETE)

Payment for the construction of the Water Tower Building (complete) will be made at the Contract lump sum amount for Bid Item 47.

Payment will be payment in full for furnishing and placing all materials, compensation for all labor, materials, furnishing all equipment, relocation of utilities within the foundation footprints, excavation, and incidentals necessary to complete the work in accordance with the plans and specifications.

No separate or additional payment will be made for the equipment, including the LED display board, and installation necessary for the construction of this bid item. Payment will be included in payment for the appropriate items which this work requires.

48. RESTROOM BUILDING (COMPLETE)

Payment for the construction of the Restroom Building (complete) will be made at the Contract lump sum amount for Bid Item 48.

Payment will be payment in full for furnishing and placing all materials, compensation for all labor, materials, furnishing all equipment, excavation, including restroom electrical panel, lights, conduit, electrical meter, design build mechanical, electrical, & plumbing, and incidentals necessary to complete the work in accordance with the plans and specifications.

No separate or additional payment will be made for the equipment, and installation necessary for the construction of this bid item. Payment will be included in payment for the appropriate items which this work requires.

49. SPLASH PAD PLUMBING AND INSTALLATION OF FEATURES (COMPLETE)

Payment for the construction of the Splash Pad Plumbing and Installation of Features (complete) will be made at the Contract lump sum amount for Bid Item 49.

Payment will be payment in full for the construction and installation of this bid item, furnishing plumbing equipment, reinforcement in the total area of the Splash Pad and footings, excavation necessary for the installation of the Splash Pad plumbing features, compensation for all labor, materials, coordination with the city of Cottage Grove and incidentals necessary to complete the work in accordance with the plans and specifications. Coordination with the City of Cottage Grove to receive the Splash Pad features is incidental to this bid item.

No separate or additional payment will be made for the construction and installation necessary for this bid item. Payment will be included in payment for the appropriate items which this work requires.

50. RAIL ELECTRIC SERVICE CABINET: RELOCATION AND INSTALLATION

The accepted quantities of the relocation and installation of the Rail Electric Service Cabinet will be made at the Contract lump sum amount

Payment will be payment in full for furnishing and placing all materials, compensation for all labor, furnishing all equipment, electrical service connection and reconnection, installation of electrical conduits, coordination with Pacific Power and Genesee & Wyoming Inc., and incidentals necessary to complete the work specified.

No separate or additional payment will be made for the relocation and installation of the Rail Electric Service Cabinet. Payment will be included in payment for the appropriate items which this work requires.

51. REMOVAL AND REINSTALLATION OF BENCH

The accepted quantities of Removal and Reinstallation of Bench will be paid for at the Contract unit price each.

Payment will be payment in full for removal of existing bench and the reinstallation of the bench per this bid item, compensation for all labor, materials, coordination with the city of Cottage Grove and incidentals necessary to complete the work in accordance with the plans and specifications.

No separate or additional payment will be made for Removal and Reinstallation of Bench. Payment will be included in payment for the appropriate items which this work requires.

CONSTRUCTION AND DEMOLITION NOTES:

- (100) RETAIN AND PROTECT SURVEY MONUMENT.
- (101) CITY CREW TO REMOVE, SALVAGE, AND REINSTALL SIGN TO NEW LOCATION AS DIRECTED BY THE CITY OF COTTAGE GROVE PUBLIC WORKS DIRECTOR.
- (102) RETAIN AND PROTECT EXISTING FENCE.
- (103) PROTECT EXISTING ELECTRIC VAULT.
- (104) PROTECT EXISTING UTILITY POLE AND GUY ANCHOR.
- (105) PROTECT EXISTING UTILITY. ADJUST BOX TO FINISHED GRADE AS NEEDED PER PUBLIC IMPROVEMENT PLANS, SHEETS C300 & C301 AND GRADING & PAVING PLAN SHEET C201.
- (106) PROTECT EXISTING SIGN.
- (107) **COORDINATE WITH OWNER FOR REMOVAL AND RELOCATION OF SIGN AS NECESSARY. CONFIRM IF OWNER WANTS SIGN REINSTALLED.**
- (108) REMOVE EXISTING SHRUB.
- (109) PROTECT EXISTING AREA DRAIN. INSTALL SEDIMENT PROTECTION AT EXISTING AREA DRAIN.
- (110) REMOVE EXISTING TREE AND GRATE W/CONCRETE COLLAR. RETURN GRATE TO THE CITY OF COTTAGE GROVE.
- (111) PROTECT EXISTING WATER LINE.
- (112) PROTECT EXISTING STORMDRAIN LINE.
- (114) PROTECT EXISTING WATER OR IRRIGATION VALVE. ADJUST RIM TO FINISHED GRADE AS NEEDED PER PUBLIC IMPROVEMENTS PLANS, SHEETS C300 & C301 AND GRADING & PAVING PLAN SHEET C201.
- (115) PROTECT EXISTING CATCH BASIN. INSTALL SEDIMENT PROTECTION AT EXISTING CATCH BASIN.
- (116) PROTECT EXISTING OVERHEAD UTILITY LINE.
- (117) PROTECT EXISTING UNDERGROUND FIBER OPTIC LINE THAT IS 36" BELOW GRADE PER LUMEN.
- (120) SAWCUT EXISTING AC PAVEMENT. PROTECT SAWCUT EDGE FROM DAMAGE.
- (121) SAWCUT EXISTING CONCRETE. PROTECT SAWCUT EDGE FROM DAMAGE.
- (127) EXISTING UTILITY POLE (PPL 20-03 POLE INVENTORY #284206) TO BE REMOVED AND ELECTRICAL JUNCTION BOX, GUY ANCHOR, AND ELECTRIC CONDUITS TO BE RELOCATED. CONTRACTOR TO COORDINATE WORK WITH PACIFIC POWER (ELKE VATH 541-967-6160).
- (128) EXISTING UTILITY POLE (PPL 20-03 POLE INVENTORY #284109), GUY ANCHOR, AND ELECTRIC CONDUITS TO BE RELOCATED. CONTRACTOR TO COORDINATE WORK WITH PACIFIC POWER (ELKE VATH 541-967-6160).
- (129) REMOVE "NO PARKING" SIGN AND RETURN TO THE CITY OF COTTAGE GROVE.
- (132) **PROTECT EDGE OF PAVEMENT.**
- (133) PROTECT EXISTING WASTEWATER LINE.
- (134) PROTECT EXISTING TREE.
- (905) INSTALL EDA PROJECT SIGN. CONTRACTOR SHALL SUPPLY, ERECT, AND MAINTAIN SIGN IN GOOD CONDITION DURING CONSTRUCTION ACCORDING TO EDA SITE SIGN SPECIFICATIONS.

LEGEND

EXISTING

- APPROX. PROPERTY LINE
- 647--- EXISTING CONTOUR
- CURB
- EDGE OF ASPHALT
- FENCE LINE
- CENTERLINE OF RAILROAD
- (E)OHW--- OVERHEAD WIRES
- W--- WATER LINE
- (E)SD--- STORM SEWER LINE
- (E)FO--- FIBER OPTIC LINE
- (E)WW--- WASTEWATER LINE

- CONCRETE
- GRAVEL
- WATER VALVE
- IRRIGATION VALVE
- WATER METER
- CATCH BASIN
- POWER POLE
- POWER POLE /w ARM
- GUY ANCHOR
- SIGN
- LIGHT POLE

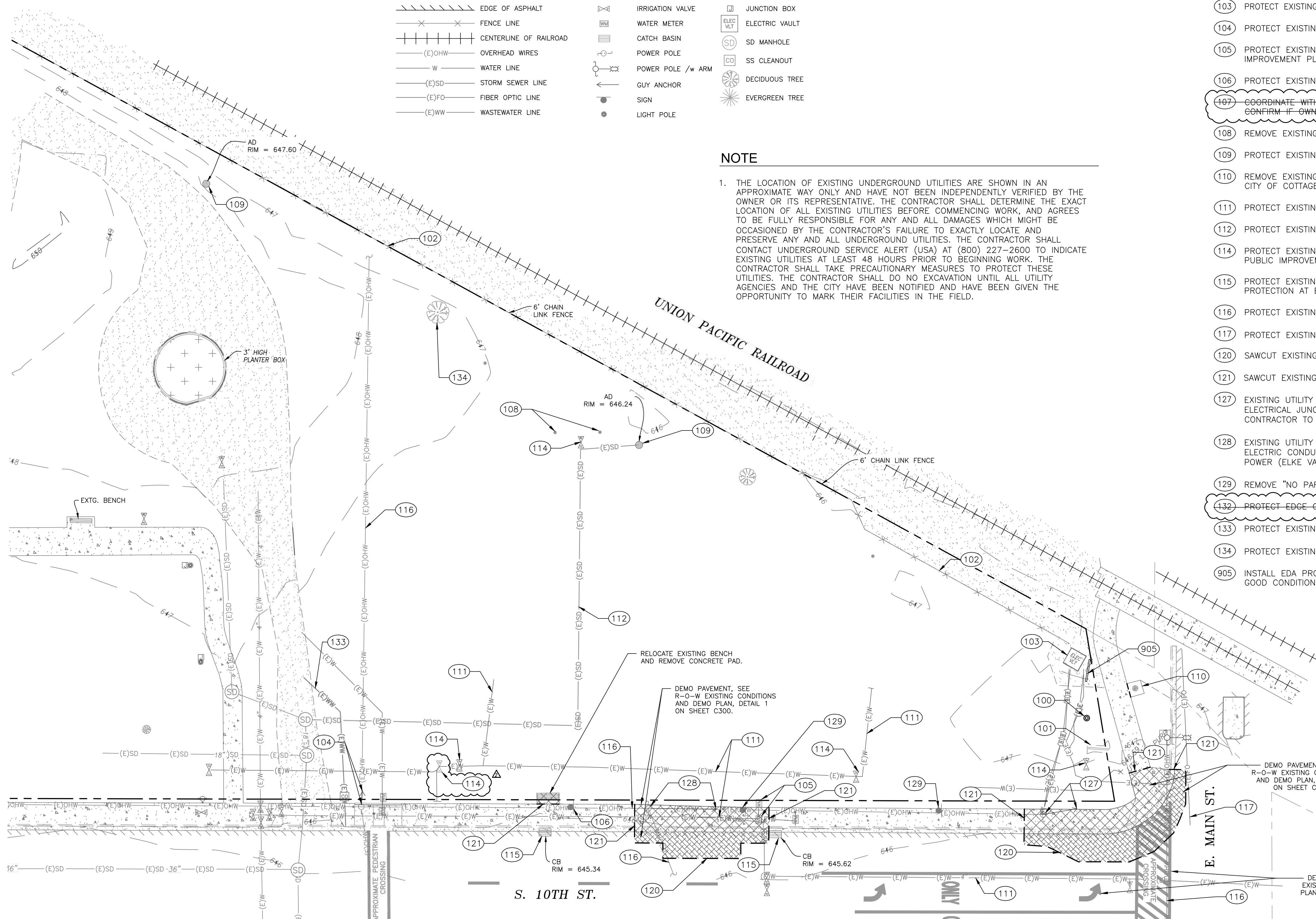
- 647.00 SPOT ELEVATION
- TL TAX LOT NUMBER
- ELECTRIC BOX
- JUNCTION BOX
- ELECTRIC VAULT
- SD MANHOLE
- SS CLEANOUT
- DECIDUOUS TREE
- EVERGREEN TREE

PROPOSED

- DEMO CONCRETE
- DEMO ASPHALT
- SAWCUT LINE

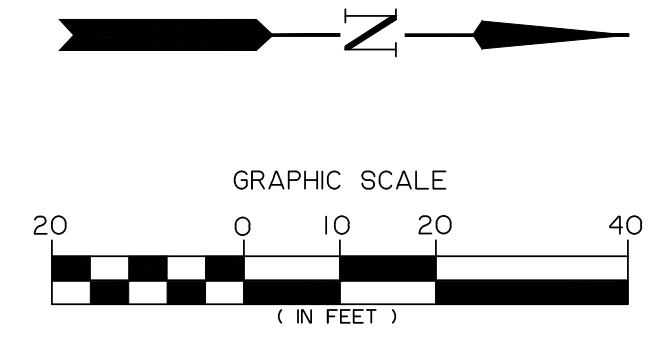
NOTE

1. THE LOCATION OF EXISTING UNDERGROUND UTILITIES ARE SHOWN IN AN APPROXIMATE WAY ONLY AND HAVE NOT BEEN INDEPENDENTLY VERIFIED BY THE OWNER OR ITS REPRESENTATIVE. THE CONTRACTOR SHALL DETERMINE THE EXACT LOCATION OF ALL EXISTING UTILITIES BEFORE COMMENCING WORK, AND AGREES TO BE FULLY RESPONSIBLE FOR ANY AND ALL DAMAGES WHICH MIGHT BE OCCASIONED BY THE CONTRACTOR'S FAILURE TO EXACTLY LOCATE AND PRESERVE ANY AND ALL UNDERGROUND UTILITIES. THE CONTRACTOR SHALL CONTACT UNDERGROUND SERVICE ALERT (USA) AT (800) 227-2600 TO INDICATE EXISTING UTILITIES AT LEAST 48 HOURS PRIOR TO BEGINNING WORK. THE CONTRACTOR SHALL TAKE PRECAUTIONARY MEASURES TO PROTECT THESE UTILITIES. THE CONTRACTOR SHALL DO NO EXCAVATION UNTIL ALL UTILITY AGENCIES AND THE CITY HAVE BEEN NOTIFIED AND HAVE BEEN GIVEN THE OPPORTUNITY TO MARK THEIR FACILITIES IN THE FIELD.



ABBREVIATIONS

AC	ACRE(S)	EXTG.	EXISTING
AD	AREA DRAIN	PROP.	PROPOSED
BP	ALIGNMENT BEGINNING POINT	SAN	SANITARY
C	CONCRETE	IE	INVERT ELEVATION
CB	CATCH BASIN	ELEV.	ELEVATION
CL	CENTERLINE	FG	FINISHED GRADE
DCA	DOUBLE CHECK VALVE ASSEMBLY	EG	EXISTING GRADE
BW	BACK OF WALK	ODOT	OREGON DEPARTMENT OF TRANSPORTATION
MAX.	MAXIMUM	PT	ALIGNMENT POINT OF TANGENCY
MH	MANHOLE	R-O-W	RIGHT OF WAY
MID	ALIGNMENT MID POINT	RG	RAIN GARDEN
MIN.	MINIMUM	SS	SANITARY SEWER
PSI	POUNDS PER SQUARE INCH	SD	STORM DRAIN
STD.	STANDARD	EP	ALIGNMENT END POINT
DWG	DRAWING	EX.	EXISTING
W/L	WATERLINE		
EP	ALIGNMENT END POINT		
EX.	EXISTING		



21/2022 12-0114 Cottage Grove Bohemia Park Expansion (Drawings) M02001A12-0011 Bohemia Park Expansion_042924_042924.dwg 5/17/2024 12:38 PM JPH/BNZ

Branch ENGINEERING
Since 1977
civil • transportation
structural • geotechnical
SURVEYING
310 5th Street
Springfield, OR 97477
P: 541-746-0637
www.BranchEngineering.com

REGISTERED PROFESSIONAL
ENGINEER
#86136PE
DIGITALLY SIGNED
OREGON
JAN. 8. 2019
JULIE LYNN LELAND
Expires: DEC 31, 2024

CITY OF COTTAGE GROVE ENGINEERING
400 Main Street Cottage Grove, OR 97424

REVISIONS:

No.	DESCRIPTION	DATE
△	REMOVE CONSTRUCTION NOTES 107 AND 132	4/26/24
△	ADD IRRIGATION VALVE W/ BUBBLE NOTE	5/02/24

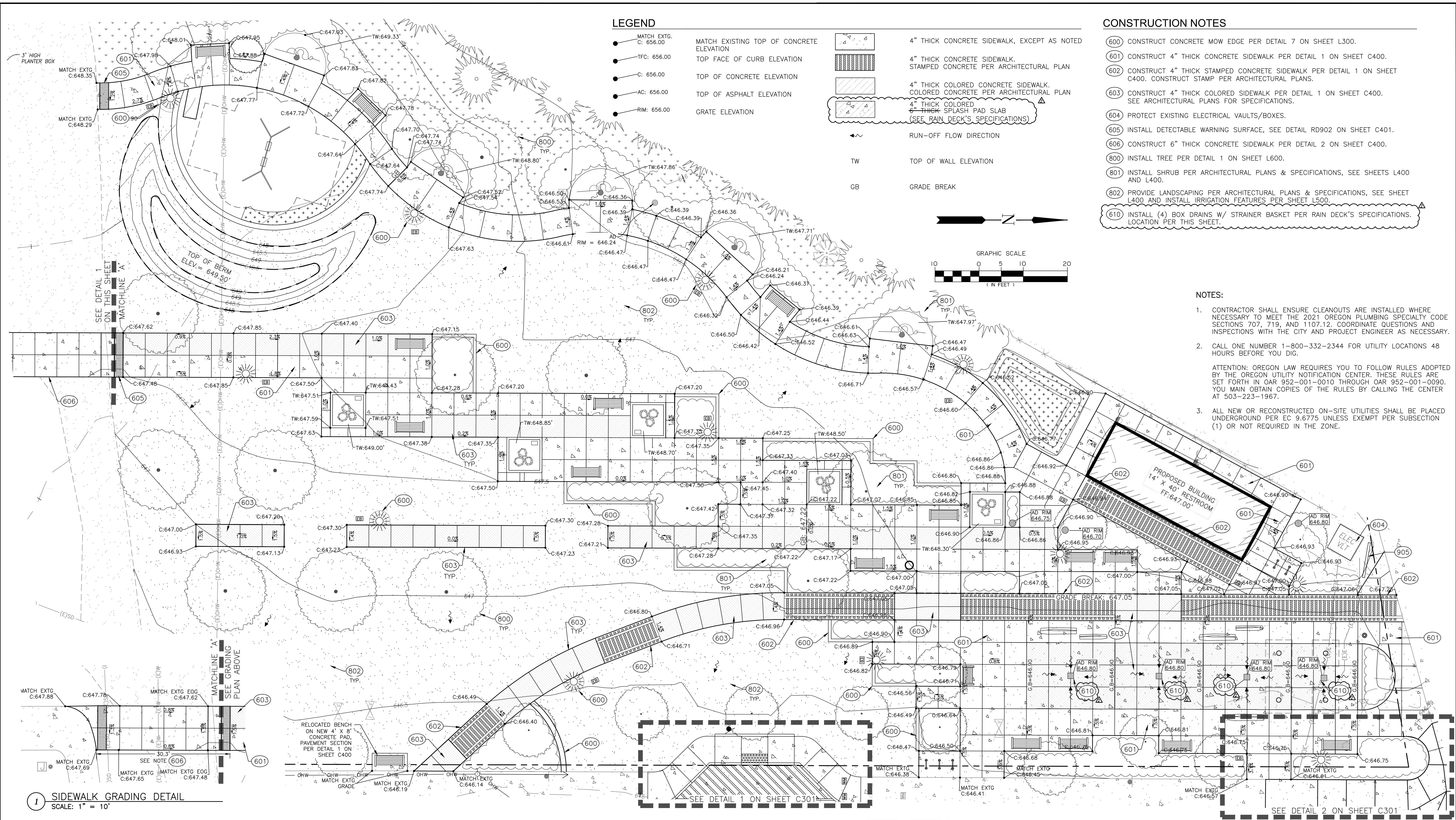
**CITY OF COTTAGE GROVE
BOHEMIA PARK EXPANSION**

EXISTING CONDITIONS AND DEMO PLAN

Sheet No. **C100**

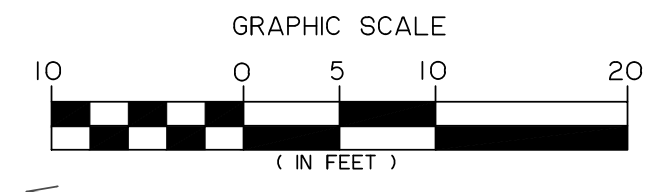
DRAWN BY: ZZ CHECKED BY: DG DATE: 04/10/24

JOB No. 22-001K



LEGEND

- MATCH EXTG. C: 656.00
 - TFC: 656.00
 - C: 656.00
 - AC: 656.00
 - RIM: 656.00
- MATCH EXISTING TOP OF CONCRETE ELEVATION
TOP FACE OF CURB ELEVATION
TOP OF CONCRETE ELEVATION
TOP OF ASPHALT ELEVATION
GRATE ELEVATION
- ▨ 4" THICK CONCRETE SIDEWALK, EXCEPT AS NOTED
 - ▨ 4" THICK CONCRETE SIDEWALK, STAMPED CONCRETE PER ARCHITECTURAL PLAN
 - ▨ 4" THICK COLORED CONCRETE SIDEWALK, COLORED CONCRETE PER ARCHITECTURAL PLAN
 - ▨ 4" THICK COLORED 6" THICK SPLASH PAD SLAB (SEE RAIN DECK'S SPECIFICATIONS)
 - RUN-OFF FLOW DIRECTION
 - TW TOP OF WALL ELEVATION
 - GB GRADE BREAK



CONSTRUCTION NOTES

- (600) CONSTRUCT CONCRETE MOW EDGE PER DETAIL 7 ON SHEET L300.
- (601) CONSTRUCT 4" THICK CONCRETE SIDEWALK PER DETAIL 1 ON SHEET C400.
- (602) CONSTRUCT 4" THICK STAMPED CONCRETE SIDEWALK PER DETAIL 1 ON SHEET C400. CONSTRUCT STAMP PER ARCHITECTURAL PLANS.
- (603) CONSTRUCT 4" THICK COLORED CONCRETE SIDEWALK PER DETAIL 1 ON SHEET C400. SEE ARCHITECTURAL PLANS FOR SPECIFICATIONS.
- (604) PROTECT EXISTING ELECTRICAL VAULTS/BOXES.
- (605) INSTALL DETECTABLE WARNING SURFACE, SEE DETAIL RD902 ON SHEET C401.
- (606) CONSTRUCT 6" THICK CONCRETE SIDEWALK PER DETAIL 2 ON SHEET C400.
- (800) INSTALL TREE PER DETAIL 1 ON SHEET L600.
- (801) INSTALL SHRUB PER ARCHITECTURAL PLANS & SPECIFICATIONS, SEE SHEETS L400 AND L400.
- (802) PROVIDE LANDSCAPING PER ARCHITECTURAL PLANS & SPECIFICATIONS, SEE SHEET L400 AND INSTALL IRRIGATION FEATURES PER SHEET L500.
- (610) INSTALL (4) BOX DRAINS W/ STRAINER BASKET PER RAIN DECK'S SPECIFICATIONS. LOCATION PER THIS SHEET.

NOTES:

1. CONTRACTOR SHALL ENSURE CLEANOUTS ARE INSTALLED WHERE NECESSARY TO MEET THE 2021 OREGON PLUMBING SPECIALTY CODE SECTIONS 707, 719, AND 1107.12. COORDINATE QUESTIONS AND INSPECTIONS WITH THE CITY AND PROJECT ENGINEER AS NECESSARY.
 2. CALL ONE NUMBER 1-800-332-2344 FOR UTILITY LOCATIONS 48 HOURS BEFORE YOU DIG.
- ATTENTION: OREGON LAW REQUIRES YOU TO FOLLOW RULES ADOPTED BY THE OREGON UTILITY NOTIFICATION CENTER. THESE RULES ARE SET FORTH IN OAR 952-001-0010 THROUGH OAR 952-001-0090. YOU MUST OBTAIN COPIES OF THE RULES BY CALLING THE CENTER AT 503-223-1967.
3. ALL NEW OR RECONSTRUCTED ON-SITE UTILITIES SHALL BE PLACED UNDERGROUND PER EC 9.6775 UNLESS EXEMPT PER SUBSECTION (1) OR NOT REQUIRED IN THE ZONE.

1 SIDEWALK GRADING DETAIL
SCALE: 1" = 10'

Branch ENGINEERING
Since 1977
civil • transportation
structural • geotechnical
SURVEYING
310 5th Street
Springfield, OR 97477
P: 541.746.0637
www.BranchEngineering.com

REGISTERED PROFESSIONAL
ENGINEER
#86136PE
DIGITALLY SIGNED
JULIE LYNN LELAND
JAN. 8. 2019
Expires: DEC 31, 2024

CITY OF COTTAGE GROVE ENGINEERING
400 Main Street Cottage Grove, OR 97424

REVISIONS:		
No.	DESCRIPTION	DATE
Δ	BOX DRAIN NOTE -- ADDENDUM #4	5/02/24

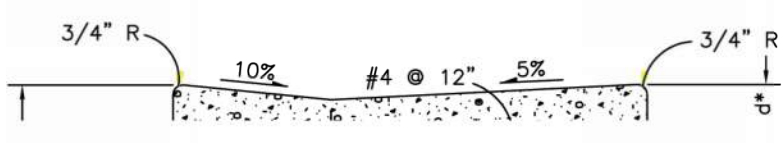
**CITY OF COTTAGE GROVE
BOHEMIA PARK EXPANSION**

GRADING & PAVING PLAN

Sheet No. **C201**

DRAWN BY: ZZ CHECKED BY: DG DATE: 04/10/24 JOB No. 22-001K

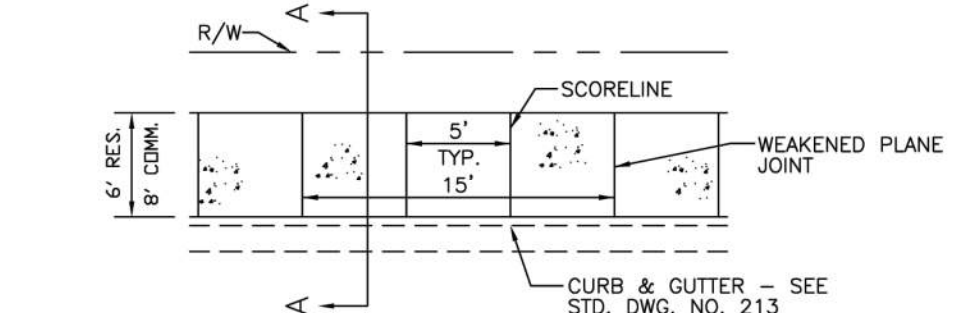
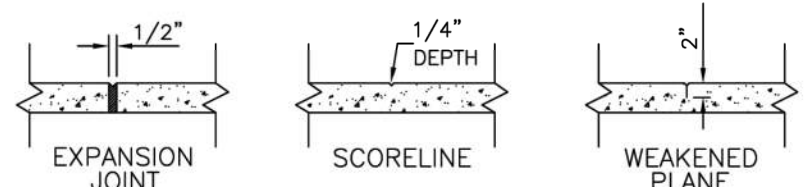
P:\2022\22-001K_Cottage Grove Bohemia Park Expansion\Drawings\MOE\012-001F_Bohemia Park Expansion.dwg 5/17/2024 12:38 PM JPH/PLZ



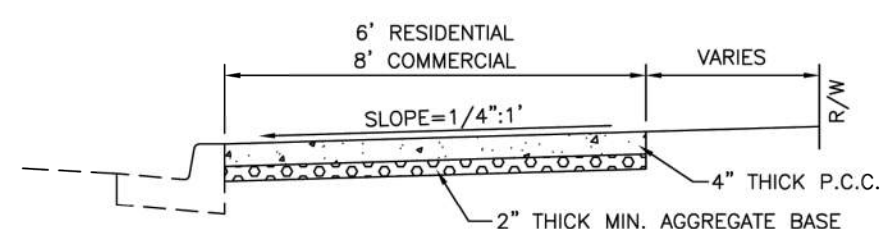
THIS DETAIL HAS BEEN MODIFIED FOR ADA COMPLIANCE

SEE NOTE 8 FOR SLOPE

SEE NOTE 8 FOR SLOPE



PLAN VIEW
NO SCALE



SECTION A-A
NO SCALE

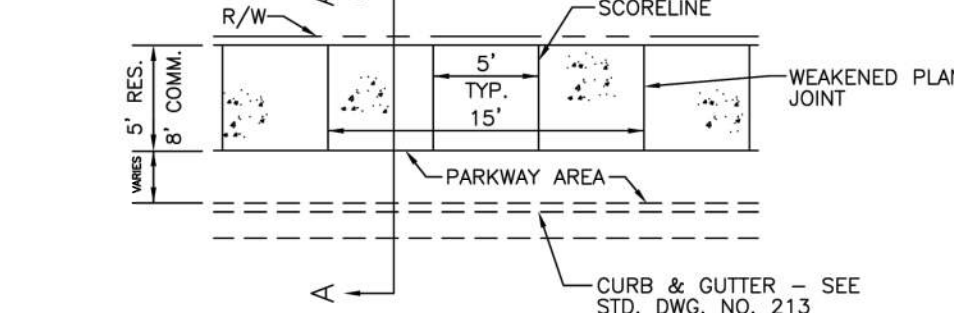
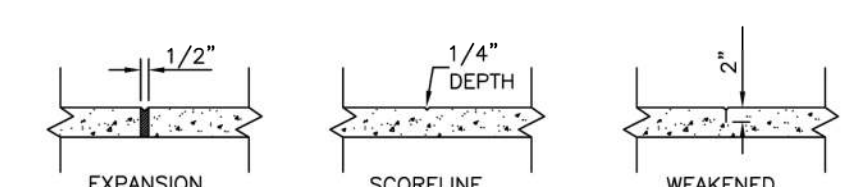
- NOTES:
- CONCRETE SHALL BE CLASS 3300-3/4 (5-1/2 SACK MIX) CONFORMING TO SECTION 00759 OF THE OREGON STANDARD SPECIFICATIONS FOR CONSTRUCTION, 2008 EDITION, AND SHALL HAVE A SMOOTH BROOM FINISH, UNIFORM IN APPEARANCE AND FREE OF IRREGULARITIES.
 - AGGREGATE BASE SHALL BE CRUSHED ROCK CONFORMING TO SECTION 00641 OF THE OREGON STANDARD SPECIFICATIONS FOR CONSTRUCTION, 2008 EDITION.
 - EXPANSION JOINT MATERIAL SHALL BE PREMOLDED BITUMINOUS STRIPS CONFORMING TO AASHTO 153, AND SHALL BE PLACED FULL DEPTH AT CURB RETURNS, DRIVEWAYS, OTHER RIGID STRUCTURES (POWER POLES, FIRE HYDRANTS, INLETS, ETC.) AND AT 45' INTERVALS.
 - WEAKENED PLANE JOINTS (CUT JOINTS) SHALL MATCH CURB JOINTS AND PLACED AT 15' INTERVALS.
 - SCORELINES SHALL BE PLACED AT 5' INTERVALS.
 - FOR HANDICAP RAMPS AND SIDEWALK AT CURB RETURNS SEE STANDARD DRAWING NO. 215B.

NO.	DATE	BY	DESIGN/ENG. DEPT
1	10/23/03	SEH	CDN
2	6/26/10	SEH	APPROVED BY:
CITY ENGINEER DATE:			

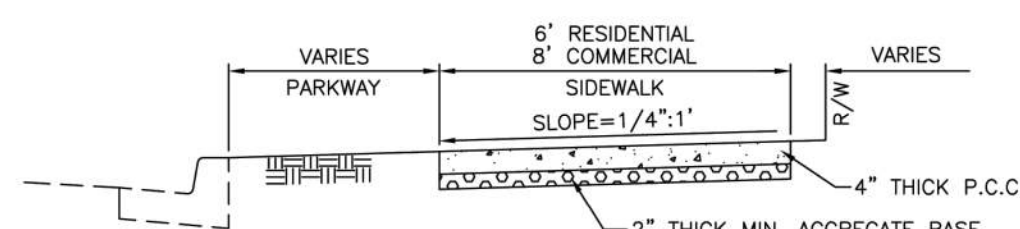


STANDARD RESIDENTIAL AND COMMERCIAL SIDEWALK

NO. 216
ADOPTED
DATE: SHEET OF



PLAN VIEW
NO SCALE



SECTION A-A
NO SCALE

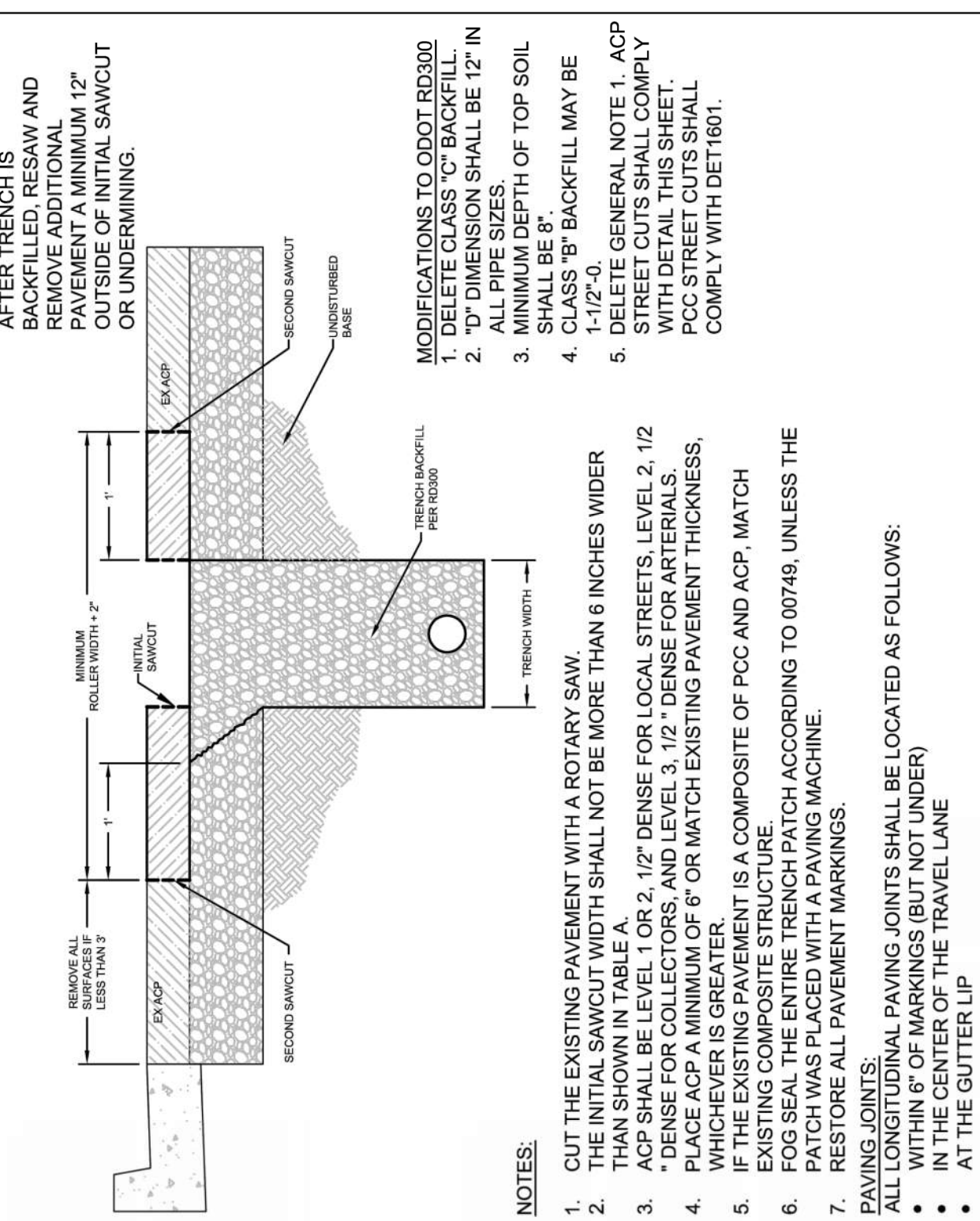
- NOTES:
- CONCRETE SHALL BE CLASS 3300-3/4 (5-1/2 SACK MIX) CONFORMING TO SECTION 00759 OF THE OREGON STANDARD SPECIFICATIONS FOR CONSTRUCTION, 2002 EDITION, AND SHALL HAVE A SMOOTH BROOM FINISH, UNIFORM IN APPEARANCE AND FREE OF IRREGULARITIES.
 - AGGREGATE BASE SHALL BE CRUSHED ROCK CONFORMING TO SECTION 00641 OF THE MOST RECENT VERSION OF THE OREGON STANDARD SPECIFICATIONS FOR CONSTRUCTION.
 - EXPANSION JOINT MATERIAL SHALL BE PREMOLDED BITUMINOUS STRIPS CONFORMING TO AASHTO 153, AND SHALL BE PLACED FULL DEPTH AT CURB RETURNS, DRIVEWAYS, OTHER RIGID STRUCTURES (POWER POLES, FIRE HYDRANTS, INLETS, ETC.) AND AT 45' INTERVALS.
 - WEAKENED PLANE JOINTS (CUT JOINTS) SHALL MATCH CURB JOINTS AND PLACED AT 15' INTERVALS.
 - SCORELINES SHALL BE PLACED AT 5' INTERVALS.
 - FOR HANDICAP RAMPS AND PARKWAY SIDEWALK AT CURB RETURNS SEE STANDARD DRAWING NO. 215C.
 - PARKWAY AREA SHALL BE LANDSCAPED AS APPROVED BY THE CITY.

NO.	DATE	BY	DESIGN/ENG. DEPT
1	10/23/03	SEH	CDN
2	02/20/18	RKB	APPROVED BY:
CITY ENGINEER DATE:			



PARKWAY RESIDENTIAL AND COMMERCIAL SIDEWALK

NO. 216A
ADOPTED
DATE: SHEET OF



- NOTES:
- AFTER TRENCH IS BACKFILLED, RESAW AND REMOVE ADDITIONAL PAVEMENT TO A MINIMUM 12" OUTSIDE OF INITIAL SAWCUT OR UNDERMINING.
 - DELETE CLASS 'C' BACKFILL.
 - MINIMUM DEPTH OF TOP SOIL SHALL BE 8".
 - CLASS 'B' BACKFILL MAY BE 1-1/2" O.
 - DELETE GENERAL NOTE 1. ACP STREET CUTS SHALL COMPLY WITH DETAIL THIS SHEET. PCC STREET CUTS SHALL COMPLY WITH DET1601.

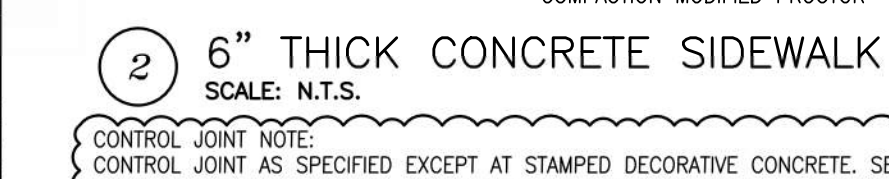
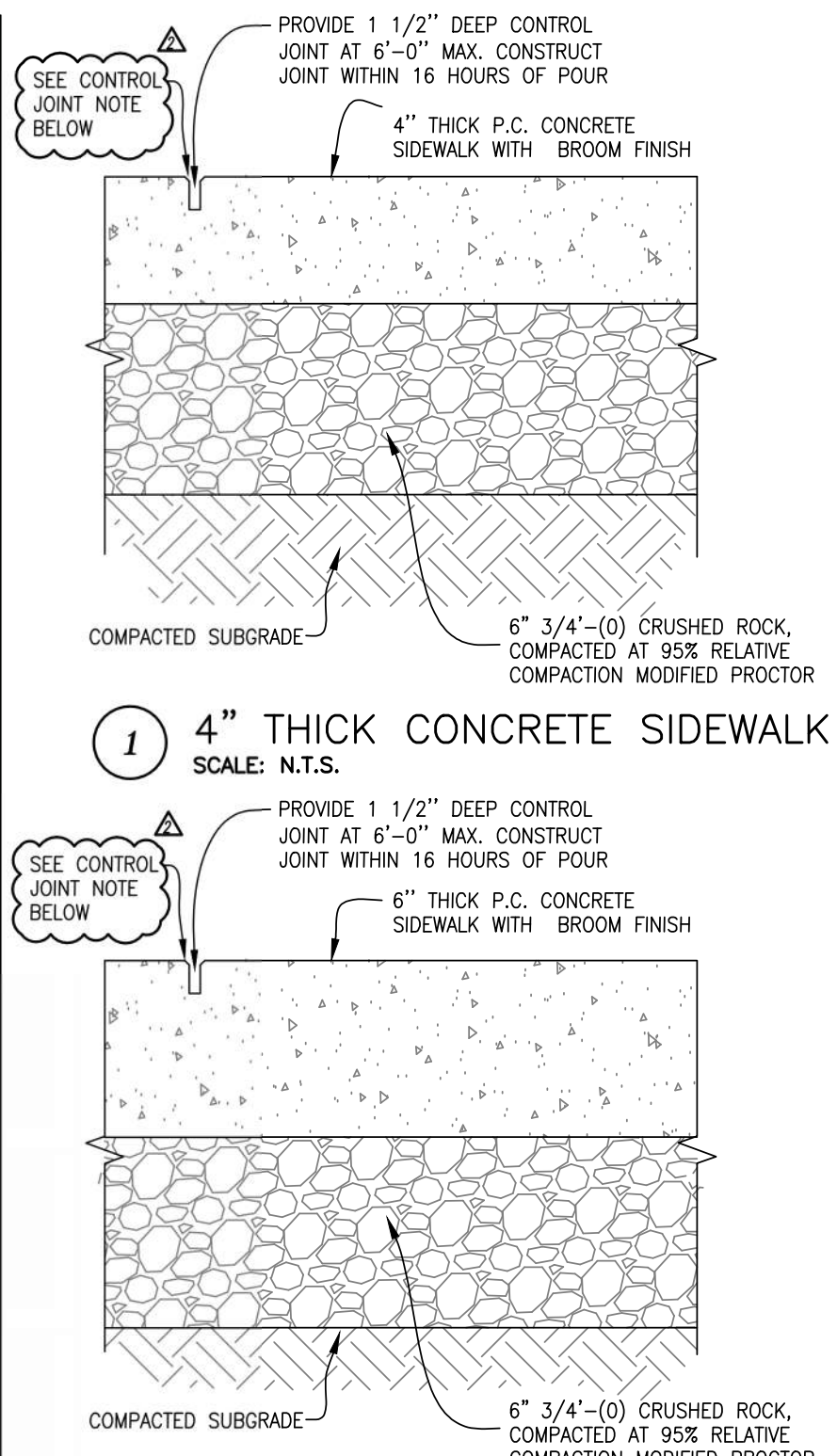
- NOTES:
- CUT THE EXISTING PAVEMENT WITH A ROTARY SAW.
 - THE INITIAL SAWCUT WIDTH SHALL NOT BE MORE THAN 6 INCHES WIDER THAN SHOWN IN TABLE A.
 - ACP SHALL BE LEVEL 1 OR 2, 1/2" DENSE FOR LOCAL STREETS, LEVEL 2, 1/2" DENSE FOR COLLECTORS, AND LEVEL 3, 1/2" DENSE FOR ARTERIALS, WHICHEVER IS GREATER.
 - IF THE EXISTING PAVEMENT IS A COMPOSITE OF PCC AND ACP, MATCH EXISTING COMPOSITE STRUCTURE WITH PATCH MACHINE.
 - PATCH WAS PLACED WITH A PAVING MACHINE.
 - RESTORE ALL PAVEMENT MARKINGS.
 - PAVING JOINTS: ALL LONGITUDINAL PAVING JOINTS SHALL BE LOCATED AS FOLLOWS:
 - WITHIN 6" OF MARKINGS (BUT NOT UNDER)
 - IN THE CENTER OF THE TRAVEL LANE
 - AT THE GUTTER LIP

NO.	DATE	BY	DESIGN/ENG. DEPT
1	11/27/18	SEH	CDN
CITY ENGINEER DATE:			



TRENCH BACKFILL, BEDDING, PIPE ZONE, AND MULTIPLE INSTALLATIONS

RD300(A)
ADOPTED
DATE: SHEET OF



CONTROL JOINT NOTE: CONTROL JOINT AS SPECIFIED EXCEPT AT STAMPED DECORATIVE CONCRETE. SEE SPECIFICATION SECTION 700 - 321316.3.2.D. SEE SECTION 700 - 321313.3.5 FOR ADDITIONAL INFORMATION REGARDING OTHER JOINT TYPES.

TABLE A

A" (ft)	B" (ft)	C" (ft)	D" (ft)
4	10	4	8
6	10	4	8
8	10	6	10
10	10	6	10
12	12	6	10
15	12	6	10
18	16	6	12
21	16	6	12
24	18	6	12
30	18	6	12
36	24	6	14
42	24	6	14
48	24	6	14
54	24	6	14
60	24	6	14
66	24	6	14
72	24	6	14

For pipes over 72" diameter, see general notes 3.

GENERAL NOTES FOR ALL DETAILS ON THIS SHEET:

- Surfacing of paved areas shall comply with street cut Std. Dwg. RD302.
- For pipe installation in embankment areas where the trench method will not be used and the pipe is > 36" diameter, increase dimension "T" to nominal pipe diameter.
- Pipes over 72" diameter are structures, and are not applicable to this drawing.
- See Std. Dwg. RD336 for tracer wire details (when required).

The selection and use of this Standard Drawing, while designed in accordance with generally accepted engineering principles and practices, is the sole responsibility of the user and should not be used without first consulting a Registered Professional Engineer.

OREGON STANDARD DRAWINGS
TRENCH BACKFILL, BEDDING, PIPE ZONE AND MULTIPLE INSTALLATIONS

DATE: 2024
REVISION DESCRIPTION:
NO. DATE BY
1 11/10/03 SEH CHECKED: SEH
2 6/15/08 JES APPROVED BY:
3 3/15/10 SEH
4 11/23/22 RKB

NO. 304
ADOPTED
DATE: SHEET 1 OF 1

CITY OF COTTAGE GROVE

ANY AND ALL SANITARY SEWER CONSTRUCTION AS SHOWN ON THIS DRAWING SHALL BE INSPECTED BY THE ENGINEERING DIVISION OF THE PUBLIC WORKS DEPARTMENT BEFORE TRENCH IS BACKFILLED (942-9758)

NOTES:

- IT IS THE CUSTOMER'S RESPONSIBILITY TO INSTALL A CLEANOUT AND MAINTAIN IT FOR THE CITY'S USE AS SHOWN, AND AS REQUIRED BY CITY ORDINANCE NO. 13.08.120.
- SANITARY SEWER SERVICE PIPE SHALL BE PVC CONFORMING TO ASTM D2034 WITH ELASTOMERIC JOINTS CONFORMING TO ASTM D3212. PVC SEWER SERVICE FITTINGS SHALL CONFORM TO ASTM D2729.
- CONNECTION TO EXISTING SANITARY SEWER MAIN SHALL BE MADE WITH A ROMAC TAPPING SADDLE, A FOWLER "INSERTA-TEE", OR APPROVED EQUAL. OTHER METHODS OF CONNECTION MAY BE APPROVED BY THE CITY ENGINEER IN CERTAIN INSTANCES. IF SEWER MAIN IS CORE DRILLED, THE CORE PLUG MUST BE REMOVED FROM THE MAIN.
- CONNECTION TO EXISTING SANITARY SEWER SERVICE SHALL BE MADE WITH A FERNOCO ELASTOMERIC COUPLING/ADAPTOR, OR APPROVED EQUAL, OF THE APPROPRIATE SIZE OR SIZES. A COMPRESSION PLUG SHALL BE INSTALLED IN THOSE SEWER SERVICES INTENDED FOR FUTURE CONNECTION. ALL RUBBER COUPLINGS MUST BE SUPPORTED BY PERMANENT BLOCKING (E. CONCRETE, AS SHOWN ABOVE).
- ALL CLEANOUTS SHALL BE PROTECTED BY THE INSTALLATION OF A BROOKS 10-1/4" 3-RIT SERIES, CONCRETE BOX WITH A TRAFFIC RATED CAST IRON FRAME AND LID OR OLYMPIC FOUNDRY 8" X 4" CLEAN OUT RING & COVER (PART NO. 11007) OR SIGMA CORP. 8" X 4" CLEAN CLEAN-OUT FRAME & COVER (PART NO. VB-97007). THE WORD "SEWER" SHALL BE STAMPED IN THE LID.
- AN ELECTRICALLY CONDUCTIVE TRACER WIRE SHALL BE INSTALLED THE ENTIRE LENGTH OF THE SANITARY SEWER LATERAL AND SHALL BE 14 GAUGE OR HEAVIER, SOLID STRAND, UNDERGROUND FEEDER CABLE, GREEN IN COLOR. THE WIRE SHALL BE COILED AROUND THE TOP OF THE CLEANOUT INSIDE THE TRAFFIC RATED CLEANOUT COVER.
- TRENCH BACKFILL AND BEDDING MATERIAL SHALL CONFORM TO CITY STANDARD DRAWING NO. 602.
- CONNECTION TO NEW SANITARY SEWER MAIN FOR NEW CONSTRUCTION SHALL BE BY TEE ONLY. WYES WILL NOT BE PERMITTED.
- SERVICES SHALL BE CONSTRUCTED PERPENDICULAR TO SEWER MAIN. HORIZONTAL BENDS SHALL NOT BE PERMITTED. ONLY ONE 45° OR SMALLER VERTICAL BEND PERMISSIBLE BETWEEN MANLINE CONNECTION AND CLEANOUT.
- FOR ANY NEW CONSTRUCTION THAT WILL UTILIZE AN EXISTING SEWER SERVICE SHALL BE REQUIRED TO T.V. INSPECT THAT EXISTING SERVICE FOR SERVICEABILITY AS DIRECTED BY THE CITY ENGINEER.
- CLEANOUTS SHALL BE CONSTRUCTED ALONG THE PROPERTY LINE AS SHOWN, OR AS DIRECTED BY THE ENGINEERING DIVISION OF THE PUBLIC WORKS DEPARTMENT.

REVISIONS:

NO.	DATE	BY	DESIGN/ENG. DEPT
1	11/10/03	SEH	CDN
2	6/15/08	JES	APPROVED BY:
3	3/15/10	SEH	
4	11/23/22	RKB	

CITY ENGINEER DATE:

CITY OF COTTAGE GROVE

SINGLE SANITARY SEWER SERVICE AND CLEANOUT

NO. 304
ADOPTED
DATE: SHEET 1 OF 1

SECTION A-A
NO SCALE
PARKWAY RESIDENTIAL SIDEWALK

SECTION A-A
NO SCALE
STANDARD RESIDENTIAL AND COMMERCIAL SIDEWALK

NOTE:
NO CONNECTIONS ARE ALLOWED BETWEEN THE CITY WATER METER AND THE APPROVED BACKFLOW DEVICE.

REVISIONS:

NO.	DATE	BY	DESIGN/ENG. DEPT
1	11/17/03	SEH	CDN
APPROVED BY:			
CITY ENGINEER DATE:			

CITY OF COTTAGE GROVE

STANDARD RESIDENTIAL AND COMMERCIAL BACKFLOW LOCATION DETAIL

NO. 407
ADOPTED
DATE: SHEET OF

2" G.I.P. SIGN POST

CITY OF COTTAGE GROVE
BOHEMIA PARK EXPANSION

CIVIL DETAILS

Sheet No. C400

DRAWN BY: ZZ

CHECKED BY: DG

DATE: 04/10/24

JOB No. 22-001K

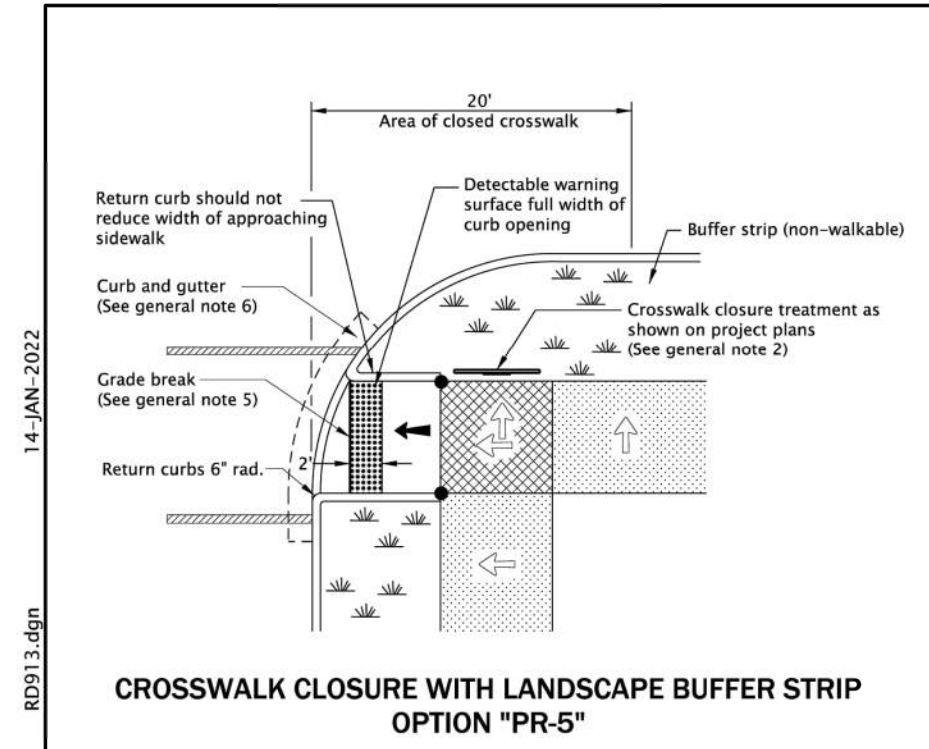
Branch ENGINEERING
civil • transportation structural • geotechnical SURVEYING
310 5th Street Springfield, OR 97477 P: 541.746.0637 www.BranchEngineering.com

REGISTERED PROFESSIONAL ENGINEER #86136PE DIGITALLY SIGNED OREGON JULIE LYNN LELAND JAN. 8, 2019 Expires: DEC 31, 2024

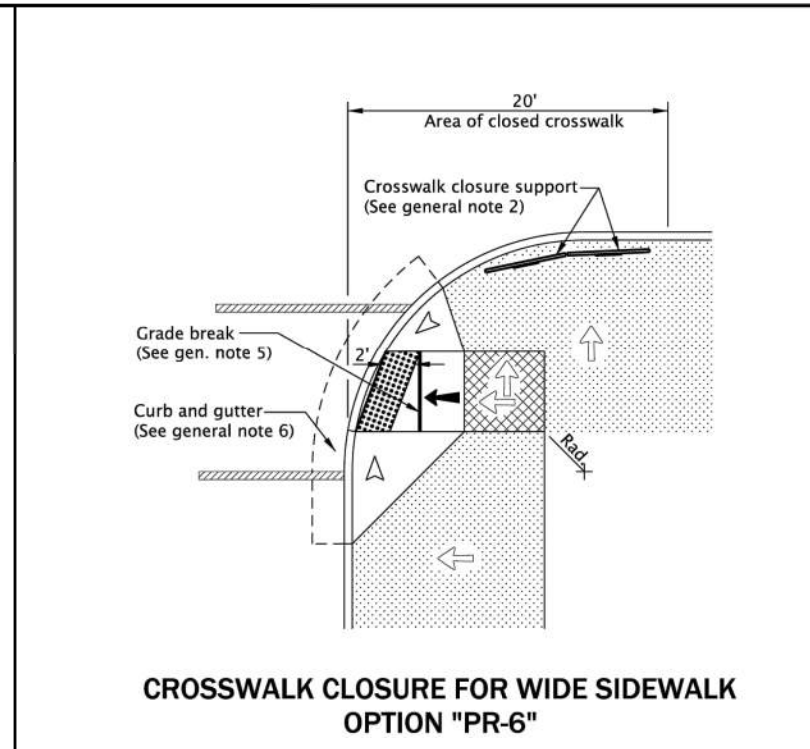
CITY OF COTTAGE GROVE ENGINEERING
400 Main Street Cottage Grove, OR 97424

REVISIONS:

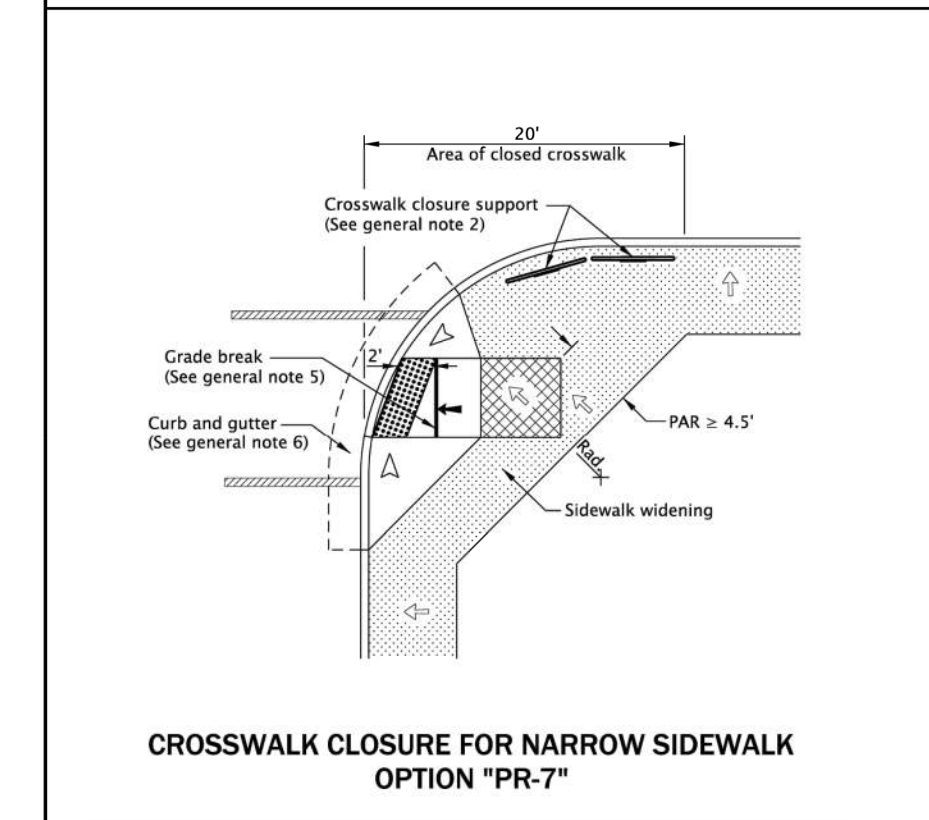
No.	DESCRIPTION	DATE
Δ	CONCRETE CONTROL JOINT NOTE - ADDENDUM #4	5/02/24



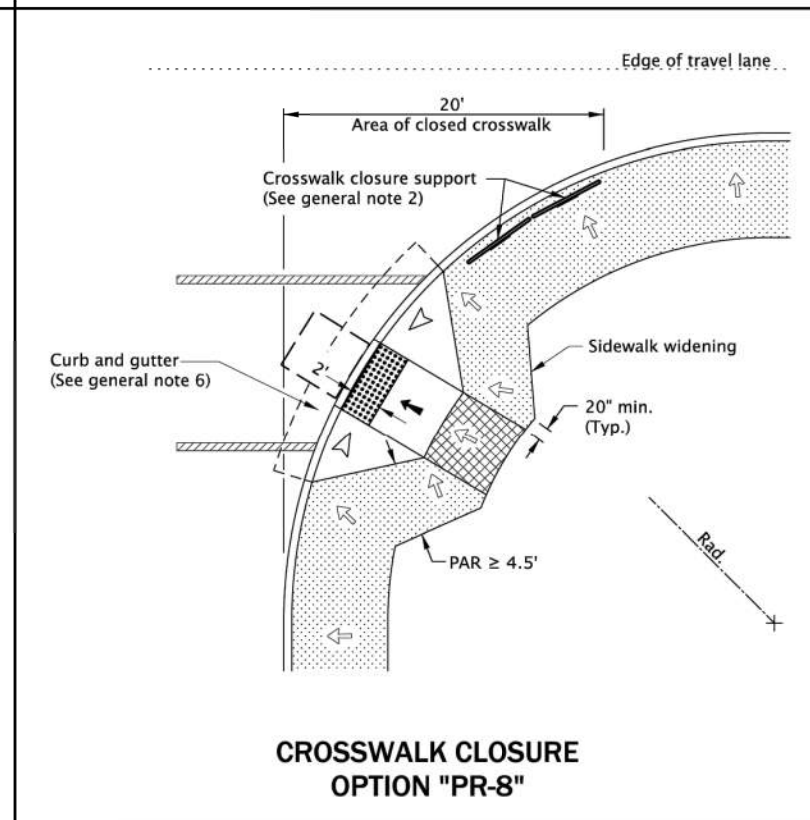
CROSSWALK CLOSURE WITH LANDSCAPE BUFFER STRIP
OPTION "PR-5"



CROSSWALK CLOSURE FOR WIDE SIDEWALK
OPTION "PR-6"



CROSSWALK CLOSURE FOR NARROW SIDEWALK
OPTION "PR-7"



CROSSWALK CLOSURE
OPTION "PR-8"

GENERAL NOTES FOR ALL DETAILS ON THIS SHEET:

- Curb ramp details are based on applicable ODOT standards.
- See project plans for details not shown.
- See Std. Dwg. RD700 & RD701 for curbs.
- See Std. Dwg. RD720 & RD721 for sidewalks.
- See Std. Dwg. RD910 for perpendicular curb ramp details.
- See Std. Dwg. RD900 through RD908 for detectable warning surface installation details.
- See Std. Dwg. TM240 for crosswalk closure detail.
- Tooled dummy joints are required at all curb ramp grade break lines. (See Std. Dwg. RD722).
- Curb ramp slopes shown are relative to the true level horizon (zero bubble).
- Grade breaks at the top and bottom of curb ramp runs shall be perpendicular to the direction of the ramp run. Grade breaks shall not be permitted on the surface of ramp runs and turning spaces. Surface slopes that meet at grade breaks shall be flush.
- On or along state highways, curb and gutter is required at curb ramps.

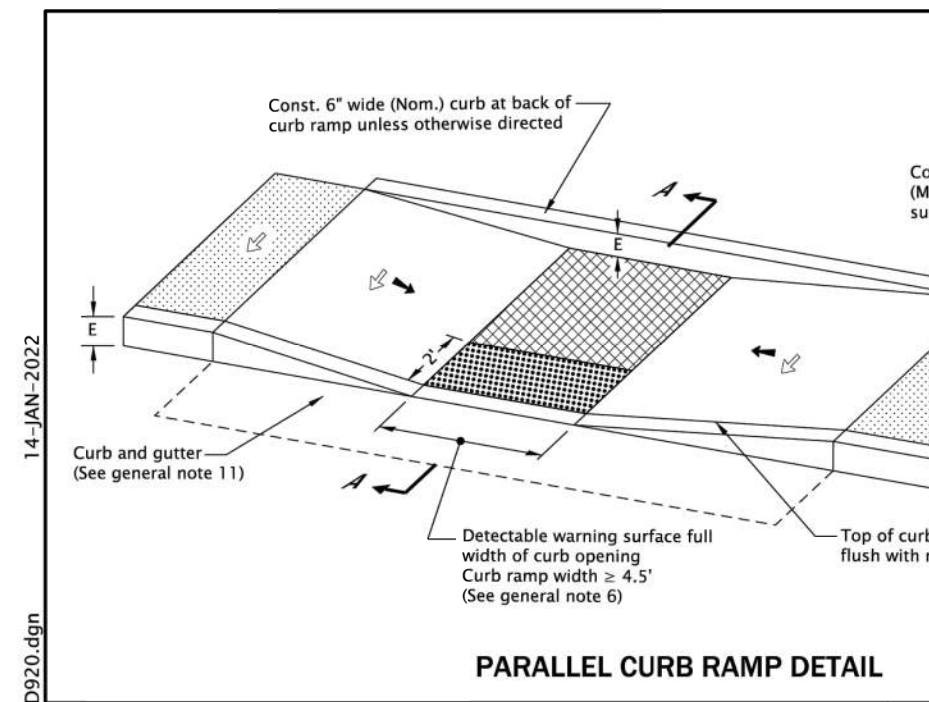
LEGEND:

- Marked or intended crossing location
- Sidewalk
- Detectable warning surface
- Level area (Turning space/landing)
Unobstructed 4.5' x 4.5'
With obstruction 4.5' x 5.5' (Longer dimension in direction of pedestrian street crossing).
For the purposes of this application, a max. 2.0% finished surface slope (for drainage) measured perpendicular in two directions is considered level.
- Cross slope 1.5% max.
(Max. 2.0% finished surface slope)
(Normal sidewalk cross slope)
- Running slope 7.5% max.
(Max. 8.3% finished surface slope)
- Flare slope
(Max. 10% finished surface slope)
- Zero curb exposure
- 4' x 4' clear space
- PAR Pedestrian Access Route

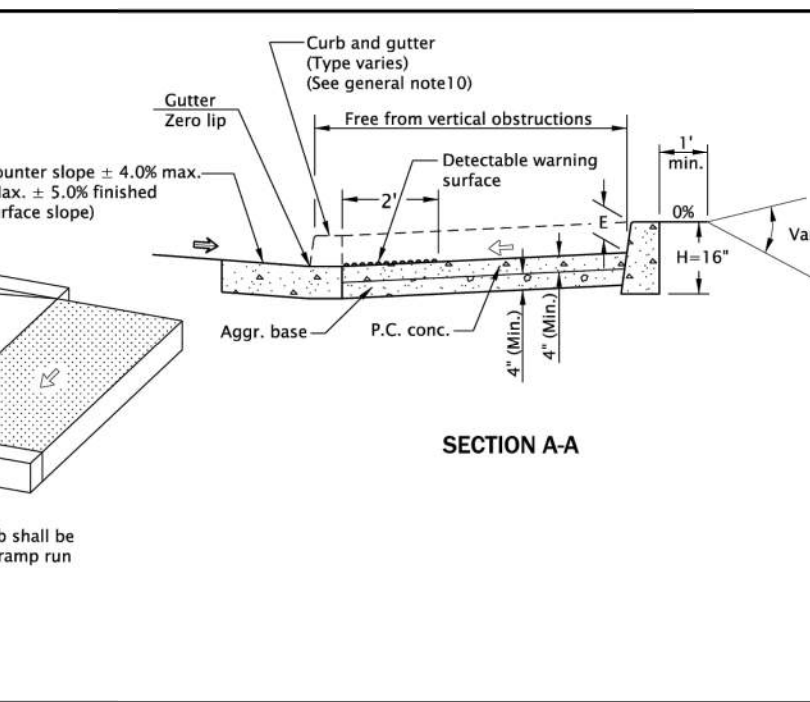
The selection and use of this Standard Drawing, while designed in accordance with generally accepted engineering principles and practices, is the sole responsibility of the user and should not be used without first consulting a Registered Professional Engineer.

All materials shall be in accordance with the current Oregon Standard Specifications.	
OREGON STANDARD DRAWINGS	
PERPENDICULAR CURB RAMP WITH CLOSURE	
2024	
DATE	REVISION DESCRIPTION
02-2024	NEW DRAWING, CHECKED BY: [Signature]
03-2024	REVISED DETAIL AND NOTES
03-2024	REVISED NOTES
CALC/MON NO.	N/A
SDR DATE	14-JAN-2022
NO.	RD913

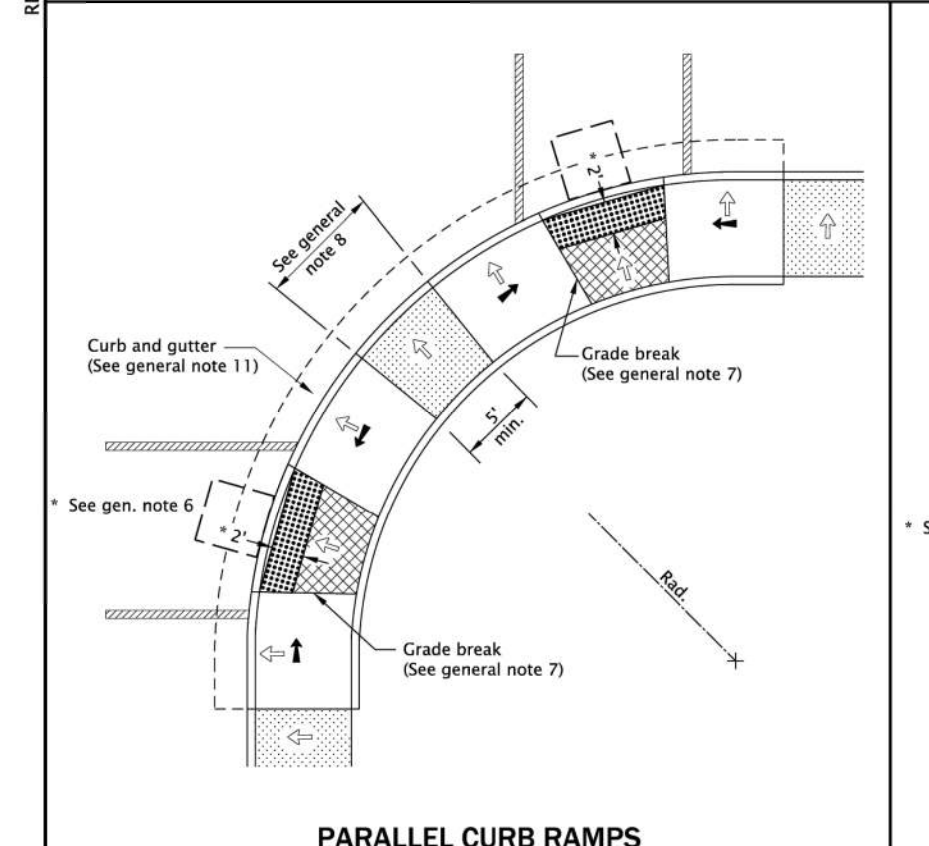
Effective Date: December 1, 2023 – May 31, 2024



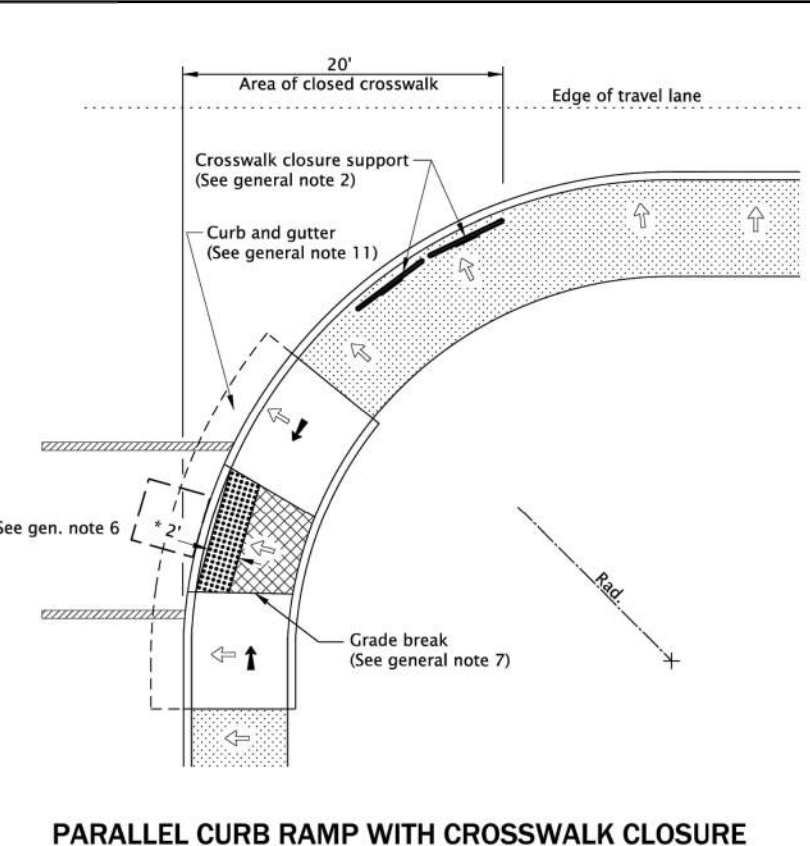
PARALLEL CURB RAMP DETAIL



PARALLEL CURB RAMP WITH CROSSWALK CLOSURE
OPTION "PL-2"



PARALLEL CURB RAMPS
OPTION "PL-1"



GENERAL NOTES FOR ALL DETAILS ON THIS SHEET:

- Curb ramp details are based on applicable ODOT standards.
- See project plans for details not shown.
- See Std. Dwg. RD700 & RD701 for curbs.
- See Std. Dwg. RD720 & RD721 for sidewalks.
- See Std. Dwg. RD910 for perpendicular curb ramp details.
- See Std. Dwg. RD900 through RD908 for detectable warning surface installation details.
- See Std. Dwg. TM240 for crosswalk closure detail.
- Tooled dummy joints are required at all curb ramp grade break lines. (See Std. Dwg. RD722).
- Curb ramp slopes shown are relative to the true level horizon (zero bubble).
- Place detectable warning surface at the back of curb for a minimum depth of 2' in the direction of pedestrian travel full width of curb ramp opening that is adjacent to traffic.
- Grade breaks at the top and bottom of curb ramp runs shall be perpendicular to the direction of the ramp run. Grade breaks shall not be permitted on the surface of ramp runs and turning spaces. Surface slopes that meet at grade breaks shall be flush.
- When 2 ramp runs are immediately adjacent, the curb exposure (E) between the adjacent side may range between 3" and full design exposure.
- Curb ramps for shared use paths intersecting a roadway shall be full width of path, excluding flares. When a curb ramp is used to provide stoic access from a roadway to a sidewalk, the curb ramp opening will be ≥ 8' wide, (see Std. Dwg. RD909 for additional details).
- Place an inlet at upstream side of curb ramp or perform other approved design mitigation. Check the gutter flow depth at curb ramp locations to assure that the design flood does not overtop the back of sidewalk.
- On or along state highways, curb and gutter is required at curb ramps.

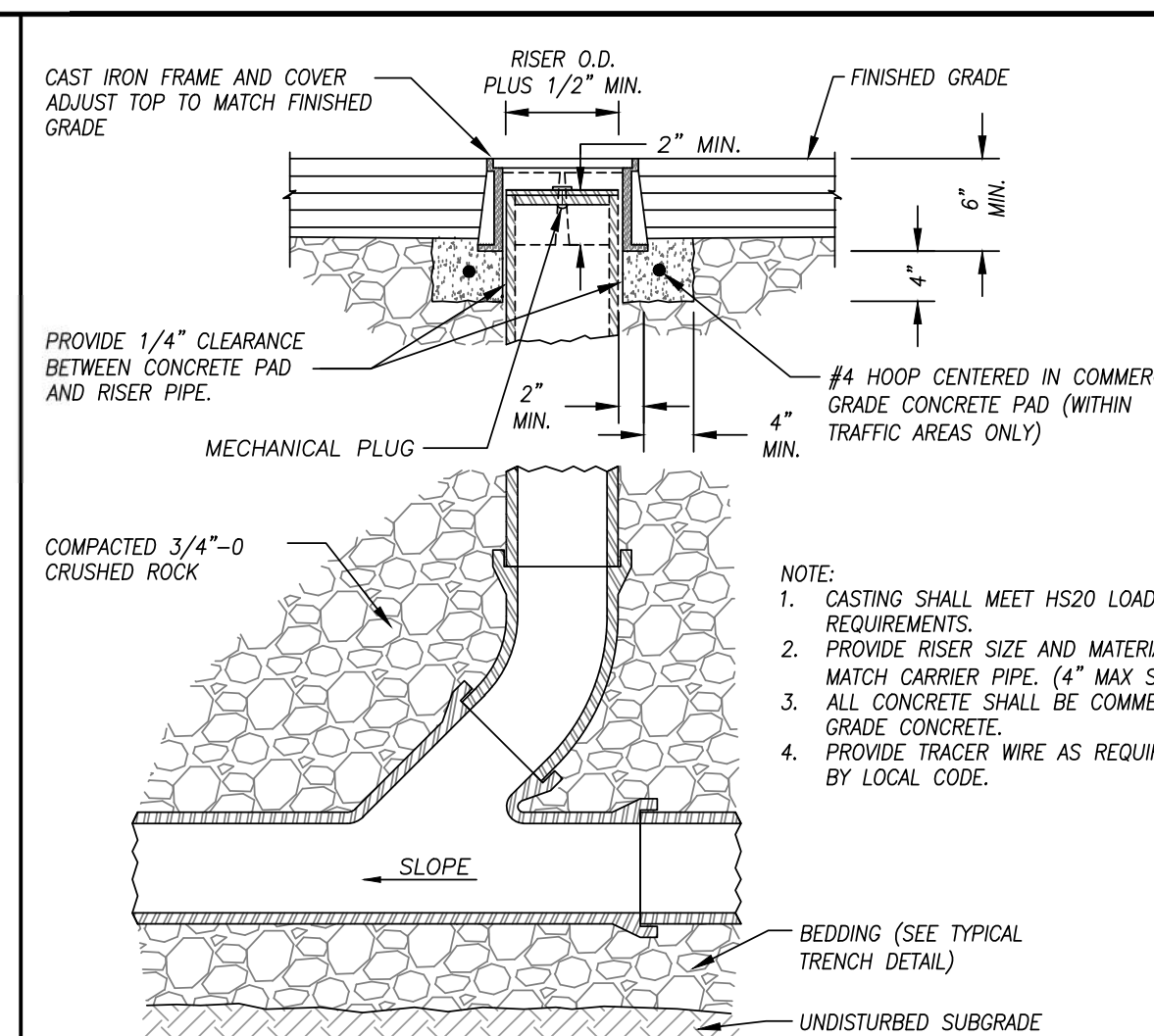
LEGEND:

- Sidewalk
- Detectable warning surface
- Level area (Turning space/landing)
Unobstructed 4.5' x 4.5'
With obstruction 4.5' x 5.5' (Longer dimension in direction of pedestrian street crossing).
For the purposes of this application, a max. 2.0% finished surface slope (for drainage) measured perpendicular in two directions is considered level.
- Cross slope 1.5% max.
(Max. 2.0% finished surface slope)
(Normal sidewalk cross slope)
- Running slope 7.5% max.
(Max. 8.3% finished surface slope)
- Counter slope 4.0% max. ascending or descending.
(Max. 5.0% finished surface slope)
Slope as required for drainage
- 4'x4' clear space

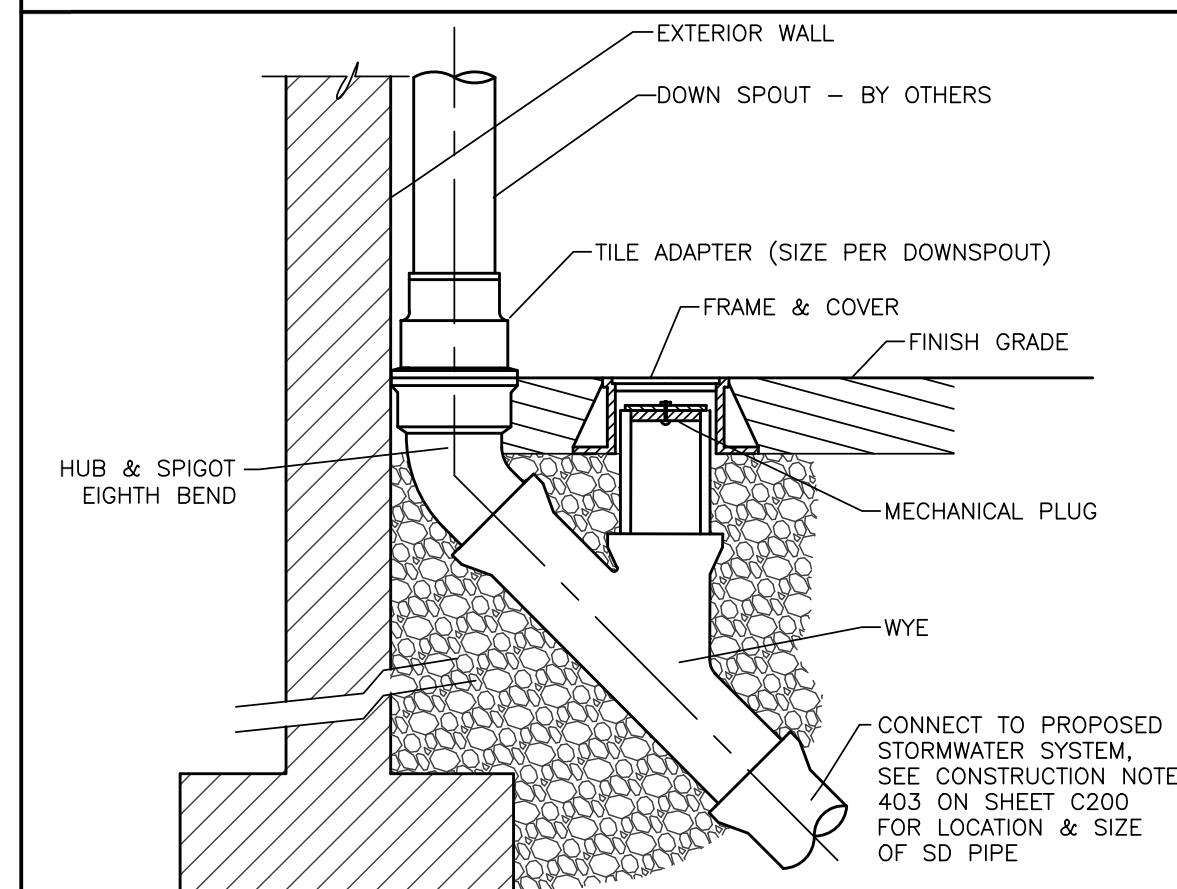
The selection and use of this Standard Drawing, while designed in accordance with generally accepted engineering principles and practices, is the sole responsibility of the user and should not be used without first consulting a Registered Professional Engineer.

All materials shall be in accordance with the current Oregon Standard Specifications.	
OREGON STANDARD DRAWINGS	
PARALLEL CURB RAMP	
2024	
DATE	REVISION DESCRIPTION
02-2024	NEW DRAWING, CHECKED BY: [Signature]
03-2024	REVISED DETAIL AND NOTES
03-2024	REVISED NOTES
CALC/MON NO.	N/A
SDR DATE	14-JAN-2022
NO.	RD920

Effective Date: December 1, 2023 – May 31, 2024

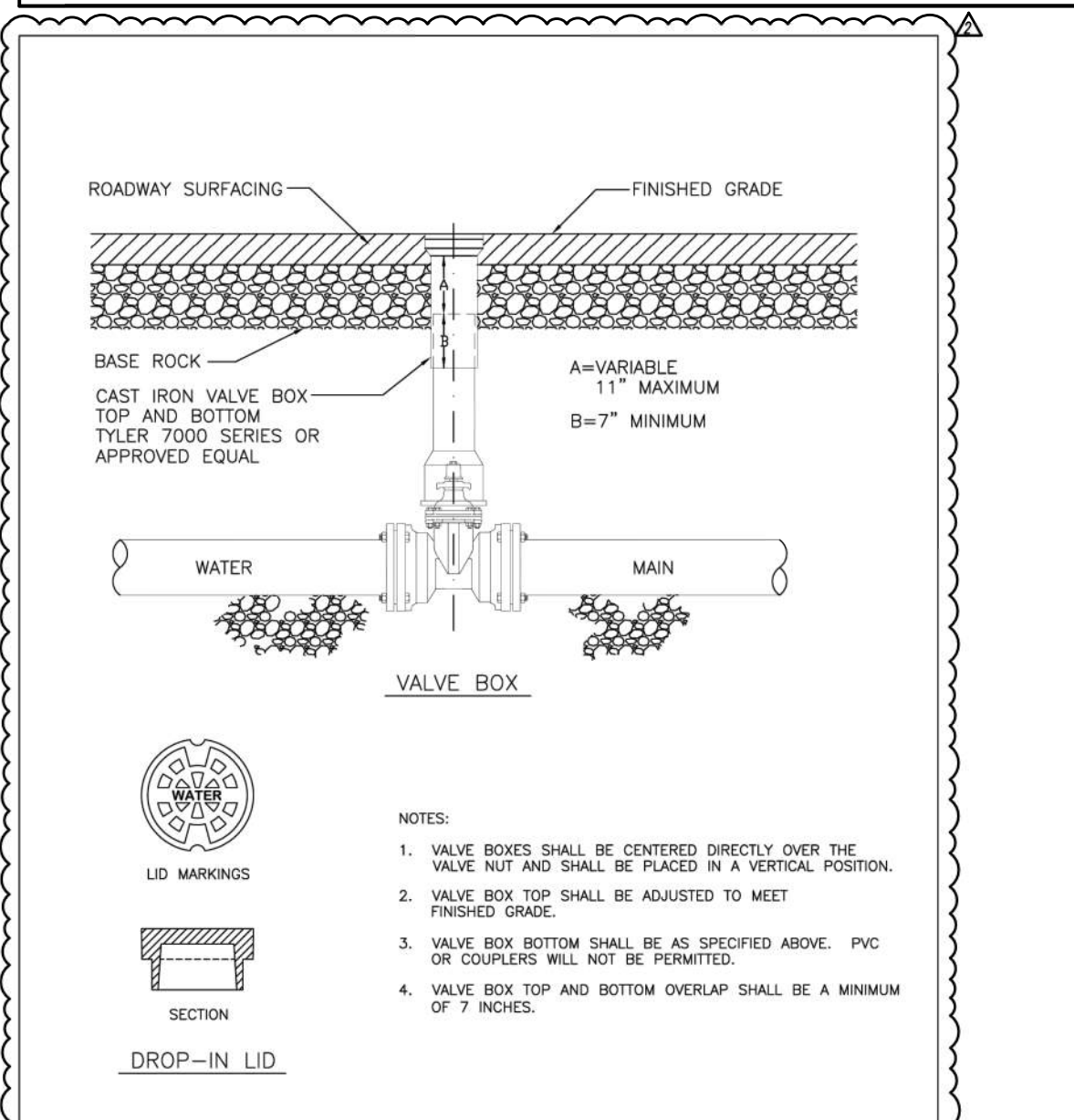


1 CLEANOUT
SCALE: N.T.S.

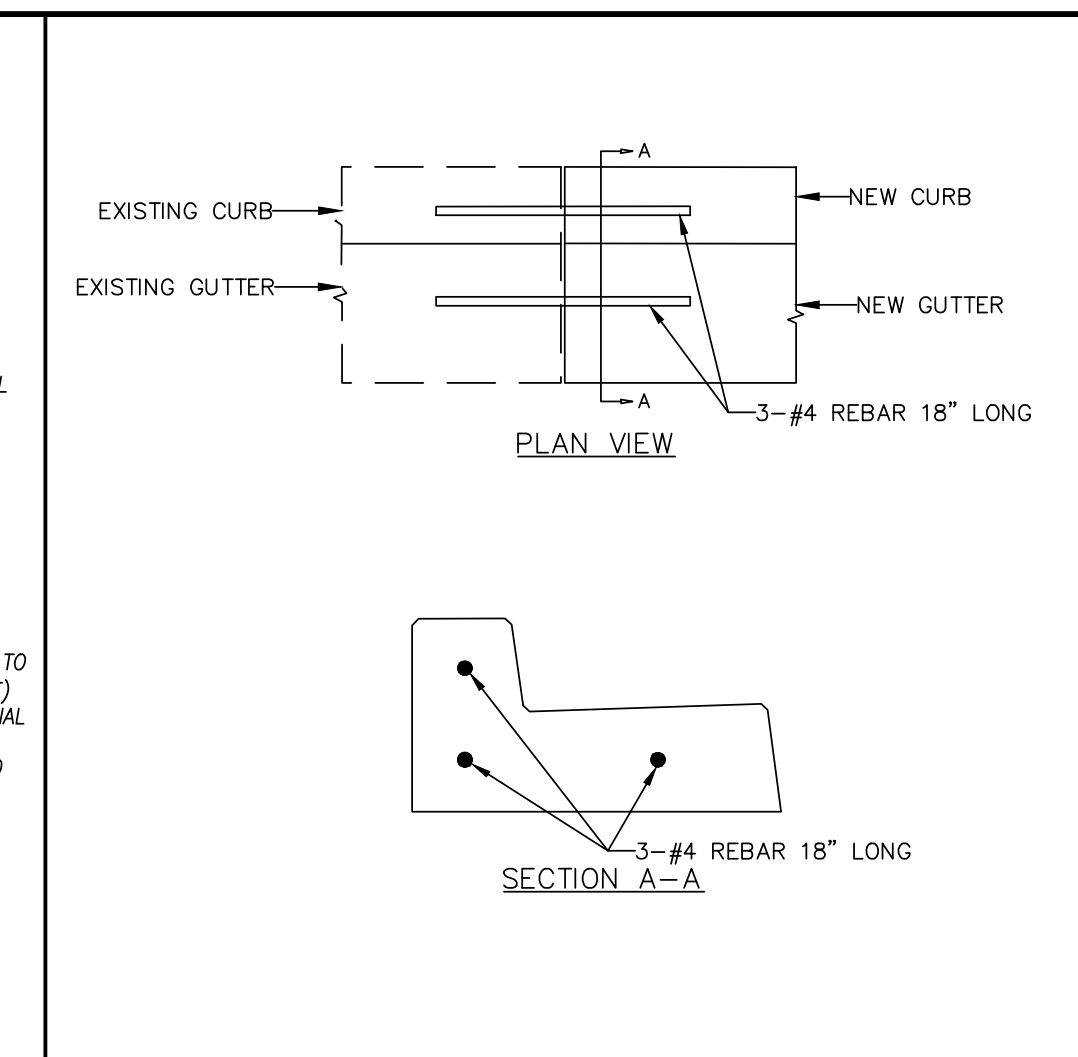


2 TIE IN NEW C&G TO EXISTING C&G
SCALE: N.T.S.

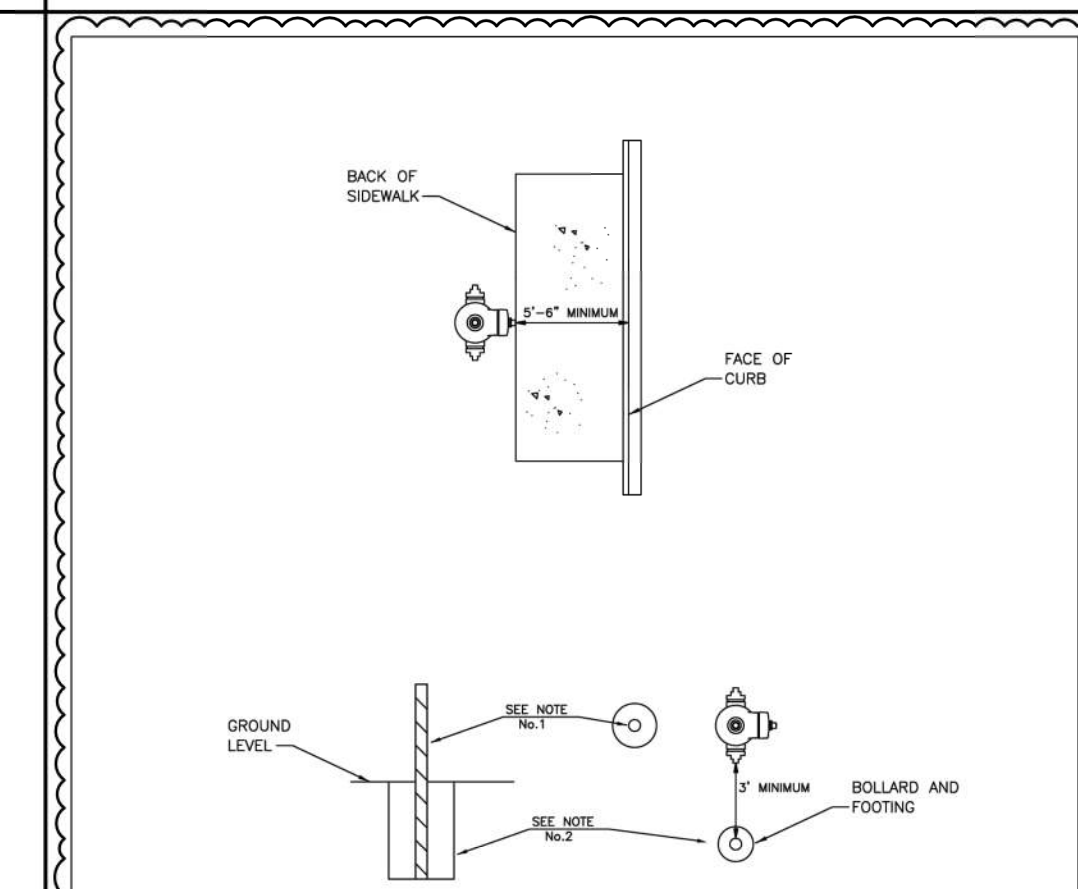
4 DOWNSPOUT CONNECTION & CLEANOUT
SCALE: N.T.S.



408 WATER VALVE BOX
SCALE: N.T.S.



3 AREA DRAIN
SCALE: N.T.S.

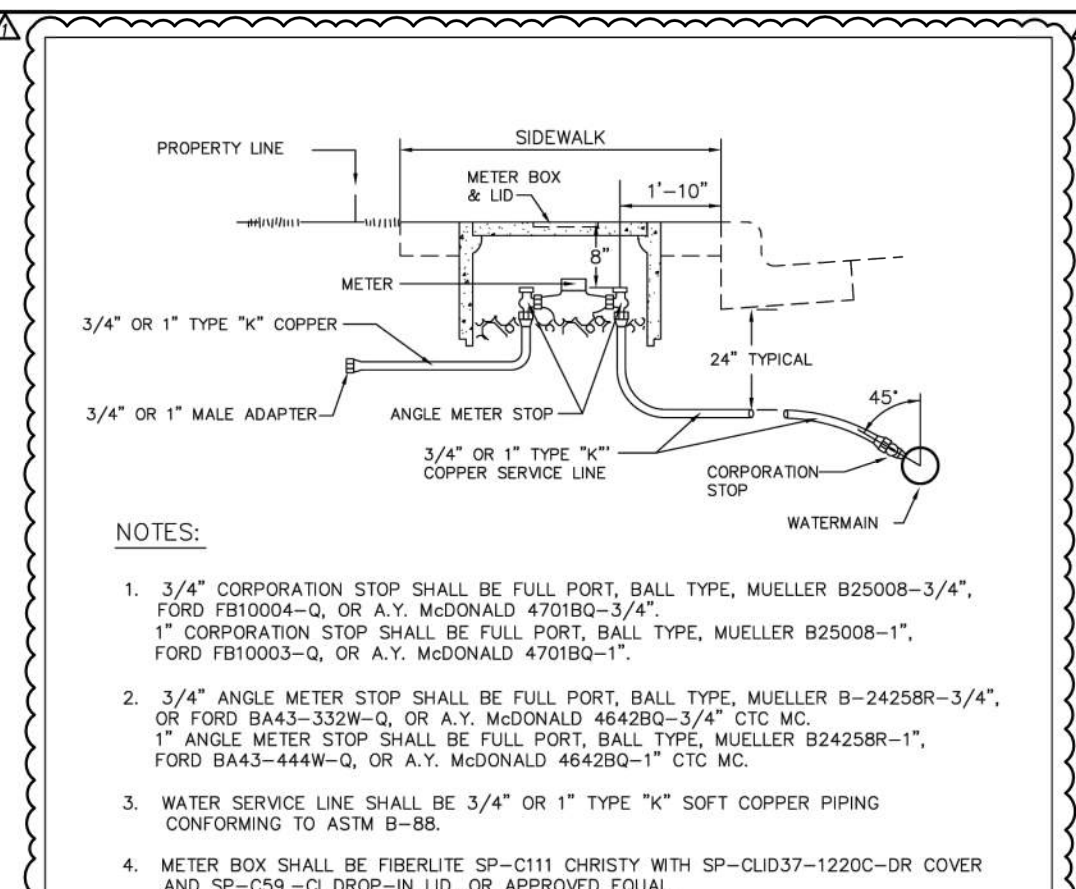


NO. 401C
BOLLARD PLACEMENT
STANDARD SIDEWALK

NO.	DATE	DESIGN ENG. DEPT	CITY ENGINEER
1	08/16/04	BY: [Signature]	APPROVED BY: [Signature]
2	11/18/03	BY: [Signature]	APPROVED BY: [Signature]

NO. 408
WATER VALVE BOX
SCALE: N.T.S.

NO.	DATE	DESIGN ENG. DEPT	CITY ENGINEER
1	08/16/04	BY: [Signature]	APPROVED BY: [Signature]
2	11/18/03	BY: [Signature]	APPROVED BY: [Signature]



NO. 403A
WATER SERVICE FOR
3/4" OR 1" (MAINTENANCE DEPARTMENT)

NO.	DATE	DESIGN ENG. DEPT	CITY ENGINEER
1	08/16/04	BY: [Signature]	APPROVED BY: [Signature]
2	11/18/03	BY: [Signature]	APPROVED BY: [Signature]

14-JAN-2022 RD913.dgn
14-JAN-2022 RD920.dgn
21/02/2024-0014 Cottage Grove Bohemia Park Expansion (Drawings) M02E001A12-0011 Bohemia Park Expansion_042924_M02E001.dwg 5/17/2024 12:38 PM JPH/ENZ

Branch ENGINEERING
Since 1977
civil • transportation
structural • geotechnical
SURVEYING
310 5th Street
Springfield, OR 97477
p: 541-746-0637
www.BranchEngineering.com

REGISTERED PROFESSIONAL
ENGINEER
#86136PE
DIGITALLY SIGNED
OREGON
JAN 8 2019
JULIE LYNN LELAND
Expires: DEC 31, 2024

CITY OF COTTAGE GROVE ENGINEERING
400 Main Street Cottage Grove, OR 97424

REVISIONS:

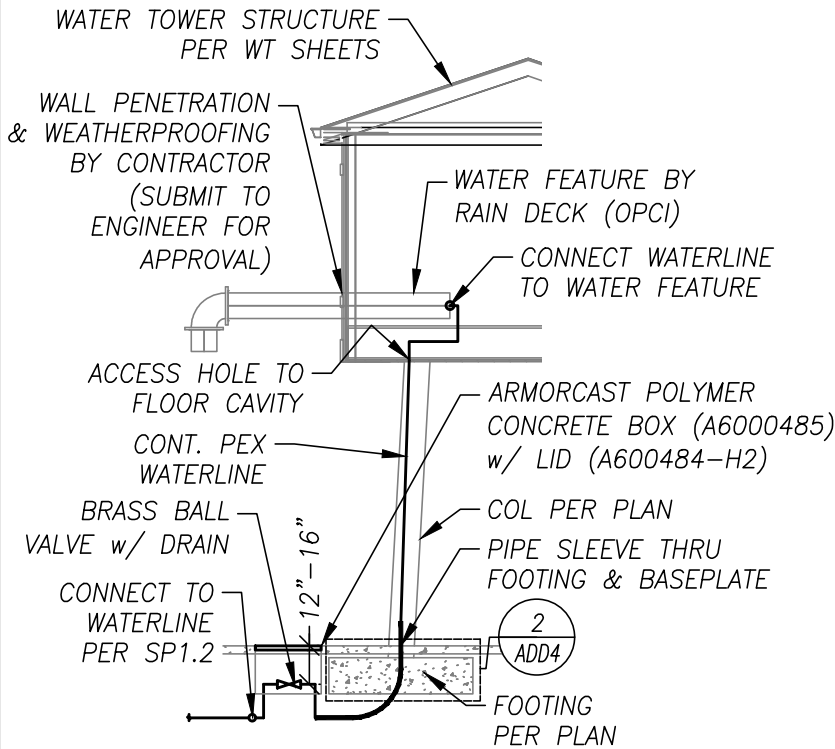
No.	DESCRIPTION	DATE
Δ	ADJUST TRANSFORMER ADD BOLLARD DETAIL	4/26/24
Δ	ADD WATER METER AND VALVE BOX DETAIL	5/02/24

CITY OF COTTAGE GROVE BOHEMIA PARK EXPANSION

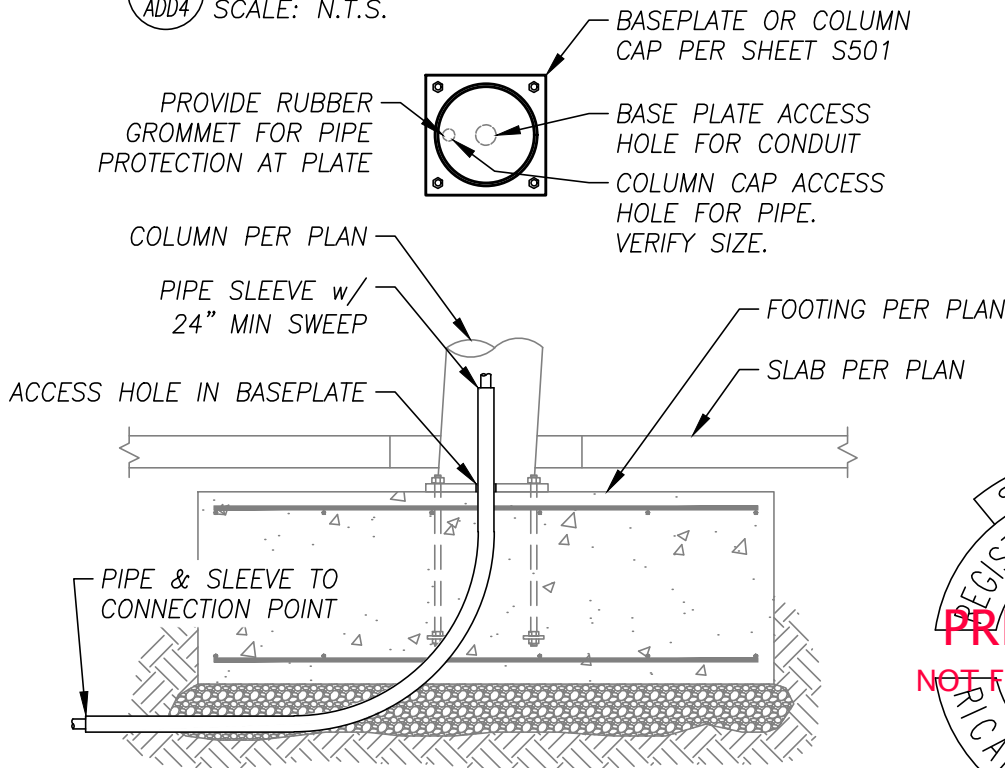
CIVIL DETAILS

Sheet No. **C402**

DRAWN BY: ZZ
CHECKED BY: DG
DATE: 04/10/24
JOB No. 22-001K



1 **PARTIAL SECTION**
ADD4 SCALE: N.T.S.



2 **PIPE SLEEVE AT FTG.**
ADD4 SCALE: N.T.S.

GENERAL NOTES:

1. CONTRACTOR TO VERIFY ALL DIMENSIONS PRIOR TO CONSTRUCTION.
2. CONDITIONS NOT SPECIFICALLY DETAILED SHALL BE IN GENERAL CONFORMANCE WITH CONSTRUCTION DETAILS OF A SIMILAR NATURE ELSEWHERE ON THE PROJECT.
3. FOR INFORMATION NOT SHOWN HERE SEE CONTRACT DRAWINGS, SPECIFICALLY SHEETS WT101 & WT501.
4. PIPING, PIPE PROTECTION, & CONNECTIONS SHALL BE DESIGN BY PLUMBING CONTRACTOR & PER CURRENT VERSION OF THE OPSC.



Renews: JUNE 30, 2025

BID SET - NOT FOR CONSTRUCTION

SCALE: N.T.S.

C.O.C.G. BOHEMIA PARK EXPANSION

ADD4

101 SOUTH 10TH STREET, COTTAGE GROVE

MAY 1, 2024

PROJECT NO: 22-001K